

## APP ELISA

## Comprehensive Lineup

- #27731 h\_sAPP, Total
- #27734 h\_sAPP $\alpha$  (h.s.)
- #27732 h\_sAPP $\beta$ -w (h.s.)
- #27733 h\_sAPP $\beta$ -sw (h.s.)
- #27736 h\_APP770
- #27776 h\_APP  $\beta$ CTF
- #27419 m/r\_sAPP $\alpha$  (h.s)



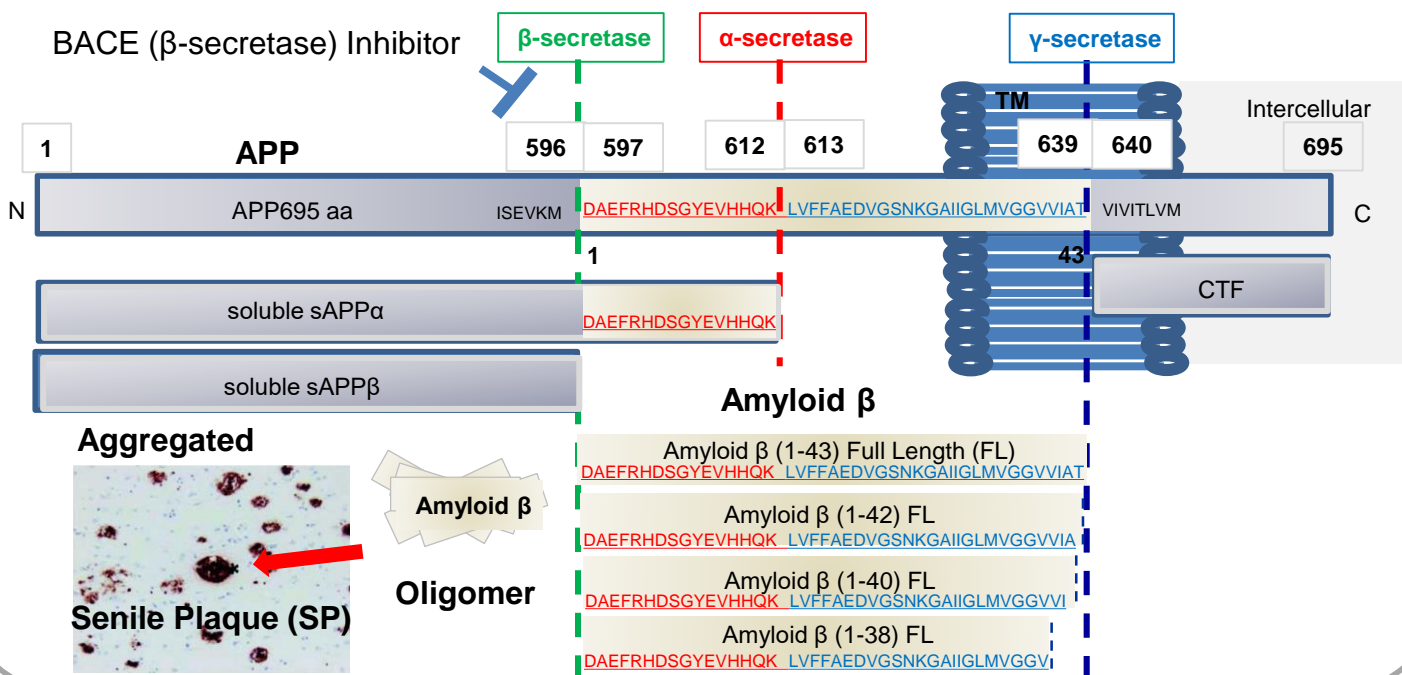
## Amyloid $\beta$ ELISA

- #27717 h\_A $\beta$  (1-38) FL
- #27718 h\_A $\beta$  (1-40) FL
- #27719 h\_A $\beta$  (1-42) FL
- #27718 h\_A $\beta$  (1-43) FL
- #27713 h\_A $\beta$  (X-40)
- #27711 h\_A $\beta$  (X-42)
- #27729 h\_A $\beta$  (1-X)
- #27418 h\_A $\beta$  (N3pE-40)
- #27716 h\_A $\beta$  (N3pE-42)
- #27709 h\_A $\beta$  Toxic Oligomer
- #27725 h\_A $\beta$  Oligomer (82E1 specific)
- #27720 m/r\_A $\beta$  (1-40) h.s.
- #27721 m/r\_A $\beta$  (1-42)

h: Human m/r: Mouse/Rat FL: Full Length h.s.: High Sensitive

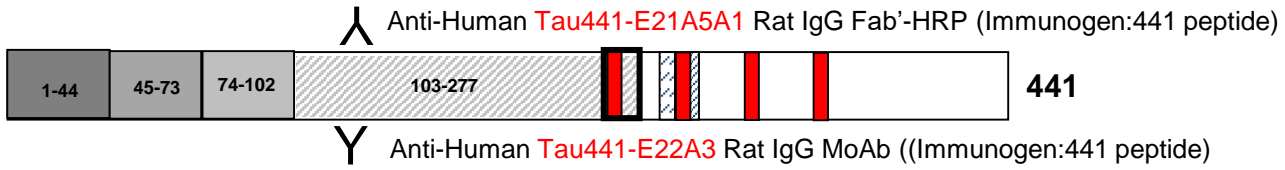
## Process of Producing Amyloid $\beta$

**APP695 aa** – Transmembrane (TM) protein / mainly expressed in neuron cell

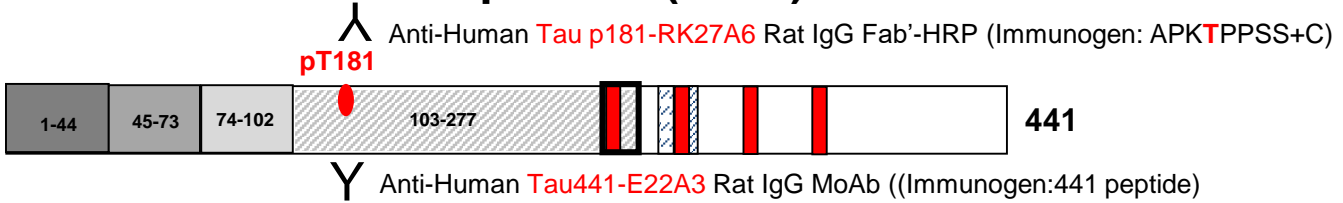


## Tau ELISA

### ➤ #27811 Human Total Tau



### ➤ #27812 Human Phospho Tau(181P)



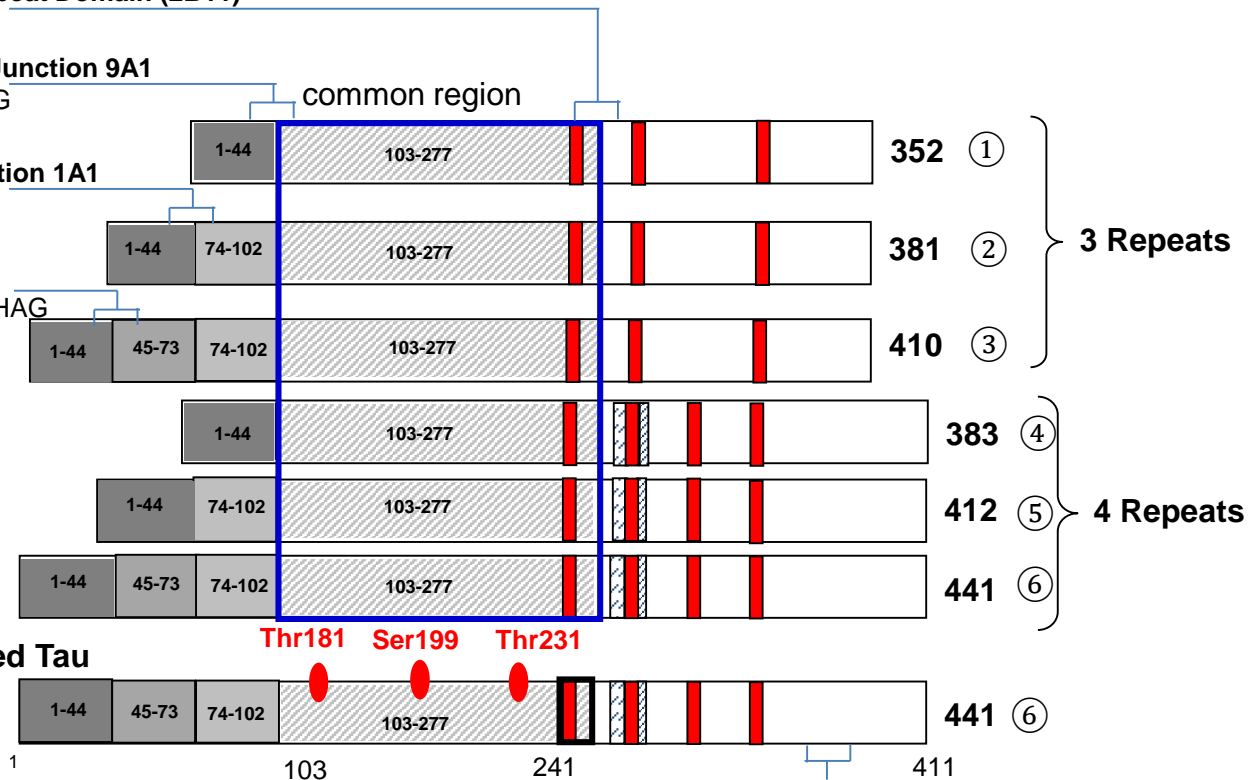
## Tau 6 Isoforms

**No 10237 Tau/Repeat Domain (2B11)**  
PGGGKVQIVYKP

**No 10233 Amino Junction 9A1**  
DTDAGLKAEEAGIG

**No 10235 E2 Junction 1A1**  
KSTPTAEAGIG

**No 18721 Tau Ab**  
AEPRQEFVEMEDHAG



**No11092 Tau C5**

386 TDHGA EIVYK**SPVVS** GDT**SPR** 406

Distributed by: **Stratech Scientific Limited.**



Address: Cambridge House, St Thomas' Place, Cambridgeshire Business Park, Ely, CB7 4EX, UK

TEL: +44 (1638) 782600 FAX: +44 (1638) 782606 Email: info@stratech.co.uk URL: http://www.stratech.co.uk