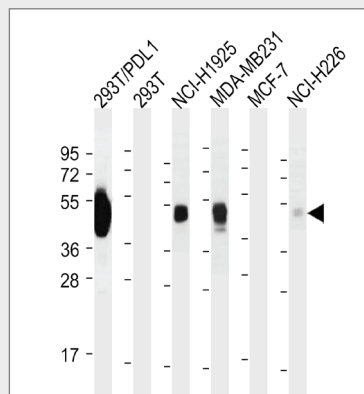


PDL1 Monoclonal Antibody

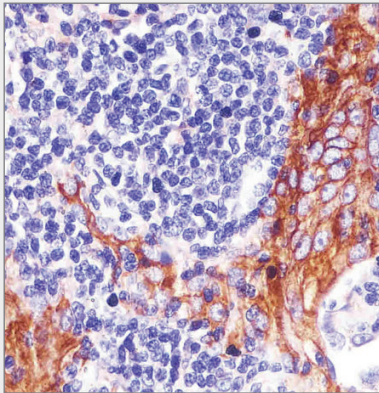
Purified Mouse Monoclonal Antibody (Mab)

Catalog # AW5698

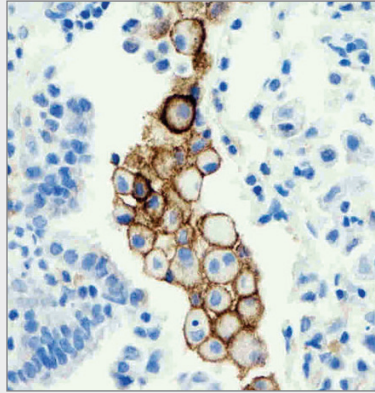
Catalog # AW5698
 Application: WB, IHC-P,E
 Primary Accession: Q9NZQ7
 Reactivity: Human
 Predicted: Human
 Host: Mouse
 Clonality: Monoclonal
 Isotype: IgG1
 Antigen Source: Human



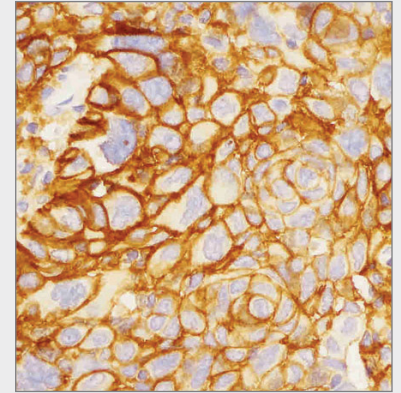
All lanes : Anti-PDL-1 Antibody at 0.5-1µg/ml dilution Lane 1: 293T/PDL1 whole cell lysate Lane 2: 293T whole cell lysate Lane 3: NCI-H1975 whole cell lysate Lane 4: MDA-MB231 whole cell lysate Lane 5: MCF-7 whole cell lysate Lane 6: NCI-H226 whole cell lysate Lysates/proteins at 30 µg per lane. Secondary Goat Anti-Mouse IgG, (H+L), Peroxidase conjugated at 1/5000 dilution. Predicted band size : 32 kDa Blocking/Dilution buffer: 5% NFDm/TBST.



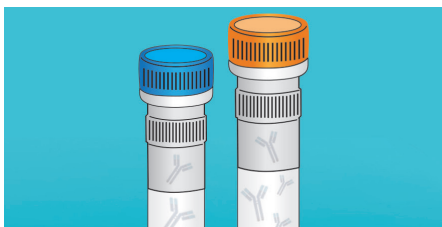
Immunohistochemical analysis of PDL-1 in human non-small cell lung carcinoma sections (IHC-P, paraformaldehyde-fixed, paraffin-embedded sections) by Dako test. Tissue was fixed with formaldehyde; antigen retrieval was by heat mediation with EDTA buffer (pH9.0). Samples were incubated with primary antibody (0.85µg/ml) for 1 hour at room temperature. Aundiluted biotinylated goat polyvalent antibody was used as the secondary antibody.



Immunohistochemical analysis of PDL-1 in human non-small cell lung carcinoma sections (IHC-P, paraformaldehyde-fixed, paraffin-embedded sections) by Leica test. Tissue was fixed with formaldehyde; antigen retrieval was by heat mediation with EDTA buffer (pH9.0). Samples were incubated with primary antibody (0.85µg/ml) for 1 hour at room temperature. Aundiluted biotinylated goat polyvalent antibody was used as secondary antibody.



Immunohistochemical analysis of PDL-1 in human non-small cell lung carcinoma sections (IHC-P, paraformaldehyde-fixed, paraffin-embedded sections) by Leica test. Tissue was fixed with formaldehyde; antigen retrieval was by heat mediation with EDTA buffer (pH9.0). Samples were incubated with primary antibody (0.85µg/ml) for 1 hour at room temperature. Aundiluted biotinylated goat polyvalent antibody was used as secondary antibody.

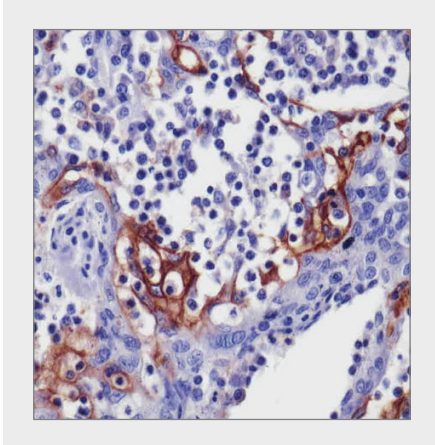


Inquire For Your Free Sample

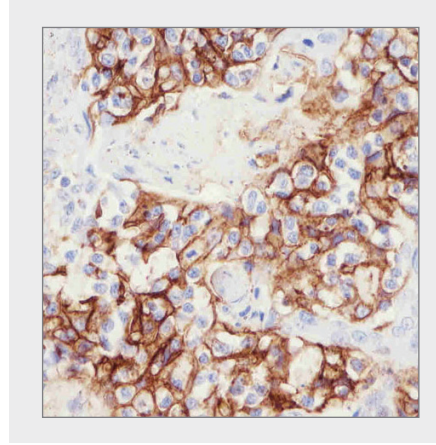
PDL1 Monoclonal Antibody

Purified Mouse Monoclonal Antibody (Mab)

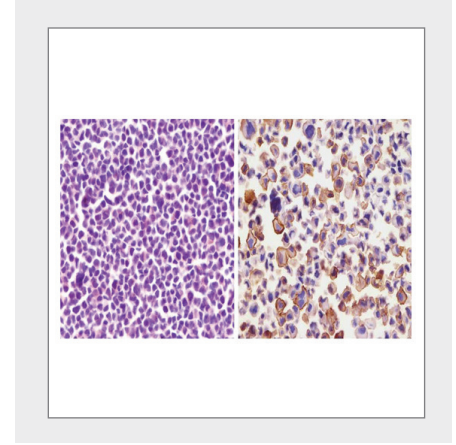
Catalog # AW5698



Immunohistochemical analysis of PDL-1 in human tonsil tissue sections(IHC-P - paraformaldehyde-fixed, paraffin-embedded sections). Tissue was fixed with formaldehyde; antigen retrieval was by heat mediation with EDTA buffer (pH9.0). Samples were incubated with primary antibody (0.85µg/ml) for 1 hour at room temperature. Aundiluted biotinylated goat polyvalent antibody was used as the secondary antibody.



Immunohistochemical analysis of PDL-1 in human tonsil tissue sections(IHC-P - paraformaldehyde-fixed, paraffin-embedded sections) by Dako test. Tissue was fixed with formaldehyde; antigen retrieval was by heat mediation with EDTA buffer (pH9.0). Samples were incubated with primary antibody (0.85µg/ml) for 1 hour at room temperature. Aundiluted biotinylated goat polyvalent antibody was used as the secondary antibody.



Immunohistochemical analysis of PDL-1 in MCF-7 cell (left) and NCI-H226(right) cell sections . Cells were fixed with formaldehyde and blocked with super block for 10 minutes at room temperature; antigen retrieval was by heat mediation with EDTA buffer (pH9.0). Samples were incubated with primary antibody (0.85µg/ml) for 1 hour at room temperature. Aundiluted biotinylated goat polyvalent antibody was used as the secondary antibody.

Custom Services

- **20,000+** antibody projects completed
- **30,000+** peptides synthesized
- **WB, IHC, IF** validation available
- AAALAC and ISO accredited facility

✓ Get Your Free Quote Today!



Catalog Products

PRIMARY ANTIBODIES (55,000+)

- Cancer
- Cardiovascular
- Cell Biology
- Developmental Biology
- Immunology
- Metabolism
- Microbiology
- Neuroscience
- Signal Transduction
- Stem Cells

SECONDARY ANTIBODIES
CELL/TISSUE/LYSATES
PEPTIDES
FL cDNA CLONES