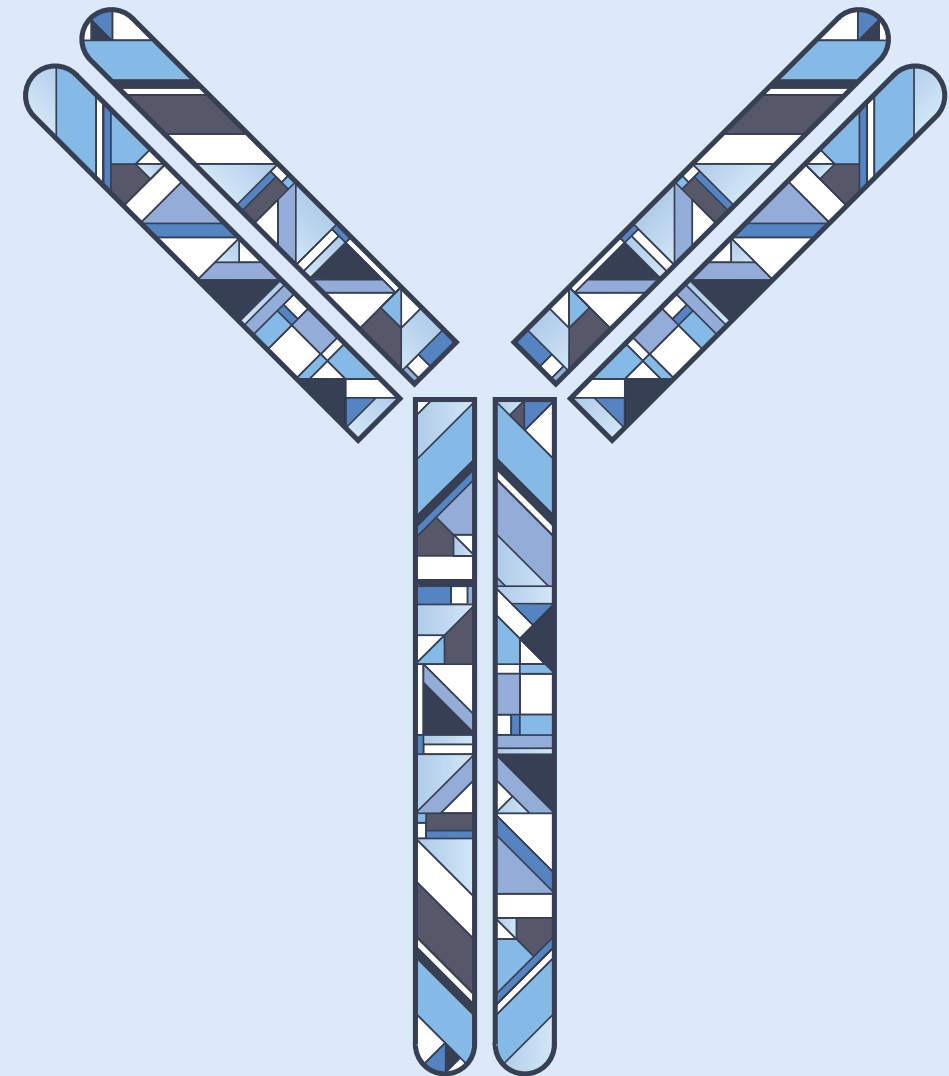
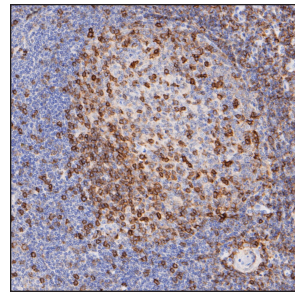
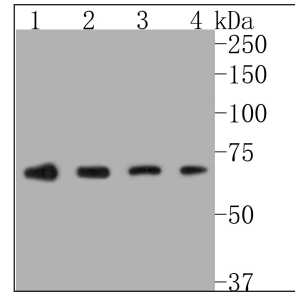


CD Markers

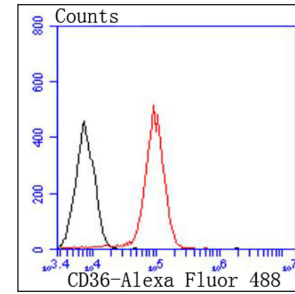




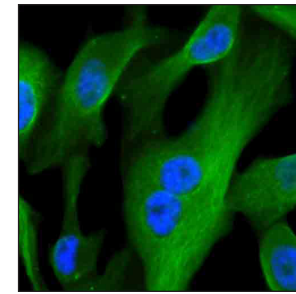
IHC-P | CD43 EM1901-70



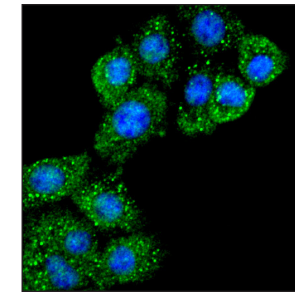
WB | CD86 ET1606-50



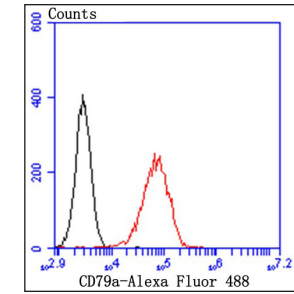
FC | CD36 ET1701-24



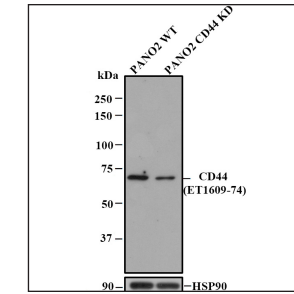
IF | CD71 ER1706-35



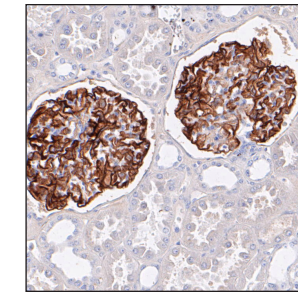
IF | CD40L ET1703-64



FC | CD79A ET7109-33



WB | CD44 ET1609-74



IHC-P | CD35 ET7111-05

TARGET	CATALOG #	CONJUGATION	APPLICATION	SPECIES
CD1a	ER1902-73	Polyclonal	WB FC	Hu Rt
CD1a	ET7110-48	Recombinant	WB IHC-P	Hu
CD3D	ET1701-57	Recombinant	WB IP IHC-P IF FC	Hu
CD3 epsilon	ER80501	Polyclonal	WB IHC-P IF FC	Hu Ms
CD3 epsilon	ET1607-29	Recombinant	WB IP IHC-P FC	Hu
CD3G	ET7107-55	Recombinant	WB IP IHC-P FC	Hu Ms
CD3 zeta	0805-7	Polyclonal	WB IF FC	Hu
CD4	0108-6	Polyclonal	WB IF FC	Hu Ms Rt
CD4	ET1609-52	Recombinant	WB IHC-P IF	Hu
CD5	ET7110-56	Recombinant	WB IHC-P	Hu
CD7	HA720023	Recombinant	IHC-P	Hu
CD8 alpha	ET1606-31	Recombinant	WB IHC-P IF	Hu
CD9	ER80402	Polyclonal	WB IHC-P IF FC	Hu Ms Rt
CD9	ET1601-9	Recombinant	WB IP IHC-P IF FC	Hu Ms Rt
CD10	ET1611-82	Recombinant	WB IHC-P IF FC	Hu Ms Rt
CD11a	ET1610-1	Recombinant	WB IP IHC-P IF FC	Hu
CD11b	ET1706-04	Recombinant	WB IP IHC-P IF FC	Hu
CD11c	ET1606-19	Recombinant	WB IP IHC-P	Hu
CD13	ET1611-61	Recombinant	WB IP IHC-P IF	Hu Ms Rt
CD14	ET1610-85	Recombinant	WB IHC-P IF	Hu
CD16	ET7109-97	Recombinant	WB IHC-P	Hu Ms Rt
CD18	ET1703-94	Recombinant	WB IP	Hu
CD19	EM40308	Monoclonal	WB IHC-P FC	Hu Ms
CD19	ET1702-93	Recombinant	WB IHC-P IF	Hu
CD20	ET1605-33	Recombinant	WB IP IHC-P	Hu Mk
CD21	ET1610-61	Recombinant	WB IP IHC-P IF	Hu Ms
CD22	EM1902-13	Monoclonal	WB IHC-P FC	Hu
CD24	0804-4	Polyclonal	WB IF FC	Hu
CD26	ET1703-93	Recombinant	WB IHC-P IF FC	Hu Ms Rt
CD27	ET7107-73	Recombinant	WB IHC-P IF FC	Hu Rt
CD28	ER2001-42	Polyclonal	WB IHC-P FC	Hu Ms Rt
CD31	ET1608-48	Recombinant	WB IP IHC-P FC	Hu
CD31	M1511-8	Monoclonal	WB IHC-P IF FC	Hu Ms
CD32	ET1703-43	Recombinant	WB IHC-P	Hu
CD34	0108-2	Polyclonal	WB IHC-P IF FC	Hu Zf
CD34	ET1606-11	Recombinant	WB IP IHC-P IF	Hu Ms Rt
CD35	ET7111-05	Recombinant	WB IHC-P	Hu
CD36	ET1701-24	Recombinant	WB IP IHC-P IF FC	Hu Ms Rt
CD38	ET7110-53	Recombinant	WB IHC-P FC	Hu
CD39	ET1704-74	Recombinant	WB IHC-P	Hu Ms Rt
CD40	ER1803-54	Polyclonal	WB IHC-P IF FC	Hu Ms Rt
CD40L	ET1703-64	Recombinant	WB IHC-P IF FC	Hu Ms
CD41	ET1703-37	Recombinant	WB IHC-P	Hu

TARGET	CATALOG #	CONJUGATION	APPLICATION	SPECIES
CD42b	ER1803-26	Polyclonal	WB IHC-P IF FC	Hu
CD43	EM1901-70	Monoclonal	WB IHC-P FC	Hu
CD44	ET1609-74	Recombinant	WB IHC-P FC	Hu
CD45	ET7111-03	Recombinant	WB IHC-P FC	Hu
CD46	ET7107-94	Recombinant	WB IHC-P IF	Hu Rt
CD47	EM1701-37	Monoclonal	WB IHC-P FC	Hu Ms
CD55	ER1802-46	Polyclonal	WB IHC-P IF	Hu
CD56	R1204-1	Polyclonal	WB IF	Hu Ms
CD59	ET1703-28	Recombinant	WB IP IF FC	Hu
CD62E	0805-6	Polyclonal	WB IF FC	Hu
CD62P	ET1703-49	Recombinant	WB IHC-P	Hu
CD63	ET1607-2	Recombinant	WB IHC-P	Hu
CD66b	HA500100	Polyclonal	WB IHC-P	Hu
CD68	ER1901-32	Polyclonal	WB IHC-P IF FC	Hu
CD68	ET1611-53	Recombinant	WB	Hu
CD69	HA500073	Polyclonal	WB	Hu Ms Rt
CD71	ER1706-35	Polyclonal	IHC-P IF FC	Hu Ms
CD73	R1107-6	Polyclonal	WB IF FC	Hu Ms
CD73	ET1703-41	Recombinant	WB IHC-P	Hu
CD74	ET1702-51	Recombinant	WB IHC-P IF FC	Hu
CD79a	ET7109-33	Recombinant	WB IHC-P IF FC	Hu
CD80	ET1702-95	Recombinant	WB IHC-P	Hu
CD80/B7-1	M1007-10	Monoclonal	WB IHC-P IF FC	Hu Ms
CD86	ET1606-50	Recombinant	WB IP IHC-P IF FC	Hu Rt
CD90	ET1608-46	Recombinant	WB IHC-P IF	Hu Rt
CD95	ER1902-56	Polyclonal	WB FC	Hu
CD99	ET1702-35	Recombinant	WB IP IHC-P IF FC	Hu
CD105	0902-1	Polyclonal	WB IHC-P IF FC	Ms
CD105	HA720072	Recombinant	WB IHC-P	Hu
CD107a	ET1701-94	Recombinant	WB IHC-P	Hu
CD133	EM1701-28	Monoclonal	IHC-P IF	Hu Ms
CD133	0804-5	Polyclonal	WB FC	Hu Ms Rt
CD134	EM1701-24	Monoclonal	WB IHC-P IF FC	Hu Ms Rt
CD137	M1701-11	Monoclonal	WB IHC-P IF FC	Hu Ms Rt
CD146	ET7107-91	Recombinant	WB IHC-P IF FC	Hu Ms Rt
CD147	ET1702-58	Recombinant	WB IHC-P IF	Hu Ms Rt
CD163	ER1804-03	Polyclonal	WB IHC-P IF	Hu Ms Rt
CD163	ET1704-43	Recombinant	WB IP IHC-P FC	Hu
CD166	M1012-7	Monoclonal	WB IHC-P FC	Hu Ms Rt
CD180	ER2001-06	Polyclonal	WB IHC-P FC	Hu Ms Rt
CD239	ET7110-04	Recombinant	WB IHC-P FC	Hu
CD271	1003-9	Polyclonal	WB IHC-P IF FC	Ms Rt
CD276	ER1803-36	Polyclonal	WB IHC-P IF FC	Hu Ms