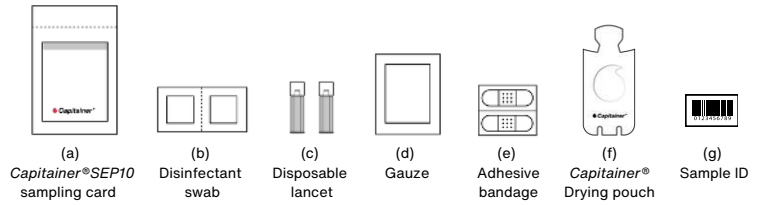




Warm hands are essential for correct fingerstick blood collection. Sampling will not be successful if your hands are cold.

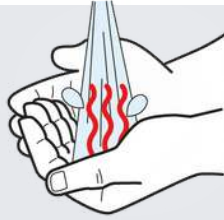


1

Before you start

- Read through the full instructions.
- Open all packages.
- Place materials, including the kit box, on a table.
- Remove the lancet's protective cover (c).
- **Mark the sampling card with sample ID (g).**

2

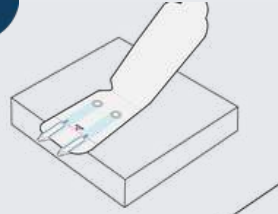


Wash your hands with **warm**, soapy water until they are really warm.

Shake your hands to increase blood flow.

Cold hands cause unsuccessful sampling.

3



Open the lid of the sampling card (a) and place it on a clean flat surface, for example a 1-2 cm-high cardboard or plastic box, with the sample inlet tips protruding over the edge as shown.

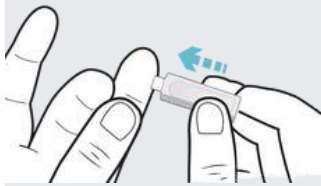
4



Choose a finger to prick (middle or ring finger). Disinfect with the swab (b) and air-dry for 15 seconds.

Use the side of your fingertip for better blood flow and less pain.

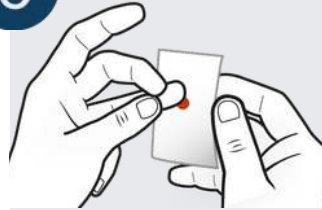
5



Press gently on your fingertip with your thumb. Push the lancet firmly against your fingertip to activate.

Release pressure on the fingertip.

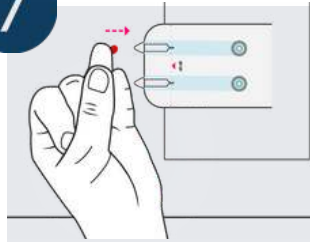
6



To ensure good blood flow, keep your hands below your heart in Steps 6, 7 & 8.

Remove the first blood drop using gauze (d)

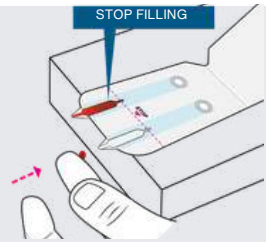
7



Let a **large blood drop** form by itself. With the hand resting on the table, approach the inlet tip sideways. Ensure the blood enters the channel.

Do not tilt the card.

8

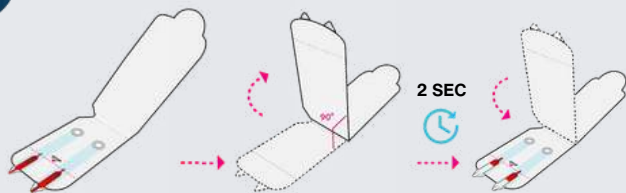


Continue to apply blood **until** it reaches the **stop line**.

Do **not** apply more blood.

Do not tilt the card.

9

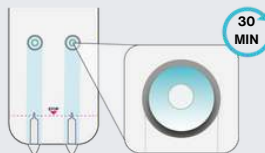


Repeat Steps 7 and 8 on the **second** channel.

When sampling is completed: **Tilt the card** to a 90-degree angle with the **inlets facing upwards** for **two seconds** and then leave it flat on the table for **30 minutes**.

Never touch, press or write on the card during or after use; this can ruin your sample.

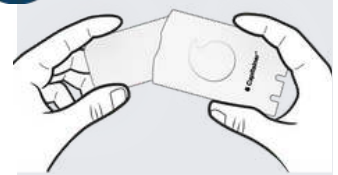
10



Stop the bleeding with gauze (d). Apply the adhesive bandage (e).

NOTE: After 30 minutes, observe that both channels are emptied and the control window shows a blue colour.

11



If sampling is successful, ensure that sample ID (g) is correctly placed. Place the sampling card with the lid closed in the drying pouch (f) and return to the laboratory.

