



Human IFN Alpha **All Subtype** ELISA Kit, High Sensitivity

for Serum, EDTA Plasma & Tissue Culture Media (TCM)

- Low picogram range detection of **ALL** human IFN- α subtypes
- Optimized for **human autoimmune serum** and EDTA plasma samples
- Assay standard range of **1.95 - 125 pg/ml** in serum, plasma & TCM
- Reproducible results with < 10% inter- and < 8% intra-assay CVs

PBL's VeriKine-HS Human Interferon Alpha All Subtype ELISA (Catalog No. 41115) equips you with a consistent, high sensitivity tool for accurately detecting **ALL** human IFN- α subtypes. Featuring **robust matrix tolerance**, including disease sera, normal serum, EDTA plasma and TCM, this immunoassay provides global IFN measurement and high data reproducibility. With purified, recombinant human IFN-2 α provided as the standard, this kit is the **most sensitive ELISA** on the market for human IFN alpha detection.

Figure 1. LLOQ and LLOD in Normal Human Serum (NHS)

| Subtype | LLOQ | LLOD |
|-------------------|------|------|
| α 1 (aD) | 2.31 | 0.76 |
| α 2a (aA) | 1.36 | 0.42 |
| α 4a (aM1) | 1.38 | 0.43 |
| α 5 (aG) | 1.70 | 0.51 |
| α 6 (aK) | 1.13 | 0.33 |
| α 7 (aJ1) | 2.09 | 0.59 |
| α 8 (aB2) | 2.81 | 0.82 |
| α 10 (aC) | 1.77 | 0.65 |
| α 14 (aH) | 1.76 | 0.51 |
| α 16 (aWA) | 2.01 | 0.68 |
| α 17 (aI) | 1.36 | 0.50 |
| α 21 (aF) | 6.18 | 1.67 |

www.stratech.co.uk

+44 (0) 1638 782600

orders@stratech.co.uk

 @stratech_uk

 @stratechscientificltd

 @stratech-scientific-ltd

free delivery
for uk
universities



we offer a
full product
guarantee



outstanding
technical
support

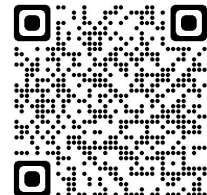
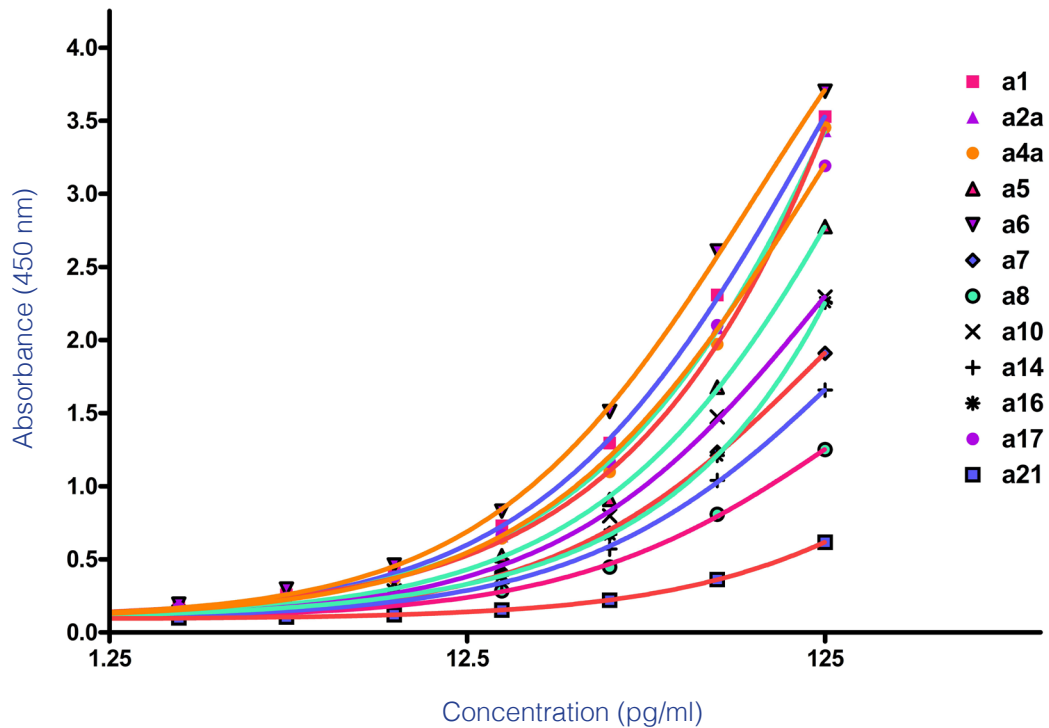


Figure 2. IFN- α Subtype Standard Curves in Normal Human Serum (NHS)



Product Information

| | |
|---------------|---|
| Product No. | 41115 |
| Description | Human IFN Alpha All Subtype ELISA, High Sensitivity |
| Size | 1 x 96-well plate (41115-1) |
| Compatibility | Serum, EDTA Plasma, Tissue Culture Media (TCM) |
| Assay Range | 1.95 - 125 pg/ml |
| Specificity | Cross-reacts with cynomolgus/rhesus IFN- α |

No cross-reactivity detected with:

- Human IFN- β , γ , ω
- Mouse IFN- α , β , γ
- Rat IFN- α , β , γ
- Bovine IFN- τ

www.stratech.co.uk

+44 (0) 1638 782600

orders@stratech.co.uk

 @stratech_uk

 @stratechscientificltd

 @stratech-scientific-ltd

free delivery
for uk
universities



we offer a
full product
guarantee



outstanding
technical
support

