

Human Interleukin Products

Highly Active Human Interleukin Proteins

High quality recombinant proteins derived from mammalian HEK293 cells

- Consistent performance and biological activity
- 95% or greater purity
- Endotoxin level < 1 EU/μg
- Well-suited for applications including Direct Binding ELISA, Western Blot, Proliferation and Secretion assays

Featured:

Human IL-22 Recombinant Protein (Cat. No. 11701)

- High purity, high specific activity
- Authentic human cell-expression with no tag

Human IL-15 / soluble IL-15Rα heterodimer (Cat. No. 11702)

- High purity, high activity recombinant human IL-15 bound to IL-15 receptor fragment
- Authentic human cell-expressed noncovalent protein dimer with no tag

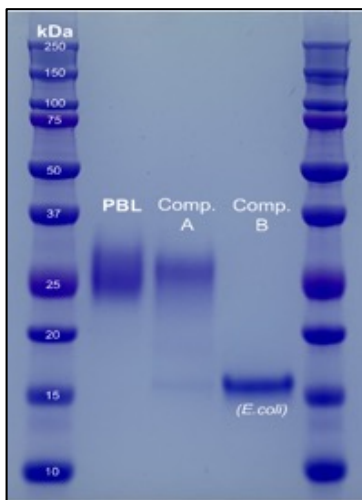


Figure 1. Comparison of Expression Systems and Purity of Human IL-22 Proteins. SDS-PAGE comparison of two human cell expressed proteins (PBL and Competitor A) and a non-glycosylated E.coli-expressed protein (Competitor B). PBL's 11701 exhibits high purity with little smudging in comparison

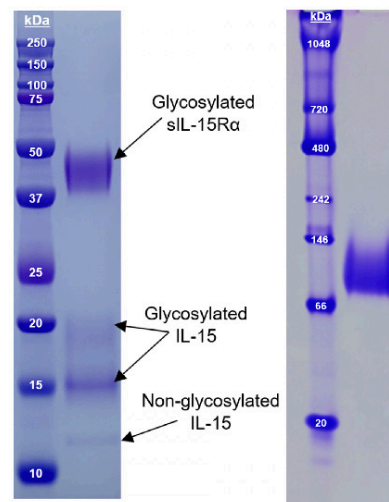


Figure 2. Reducing SDS-PAGE (Left) and Native PAGE (Right) of human cell-expressed Human IL-15 / sIL-15Rα Heterodimer (11702).

Cat. No.	Description	Size
11701-1, 2	Human Interleukin-22, human cell-expressed (HCE)	10 μg, 50 μg
11702-1, 2	Human Interleukin-15 / sIL-15Rα heterodimer, human cell-expressed (HCE)	10 μg, 50 μg



Human Interleukin 22 (IL-22) ELISA

Detect and quantitate human IL-22 in Serum, Plasma, or Tissue Culture Media.

Interleukin-22 (IL-22) is a member of the IL-10 family of cytokines. Other names include IL-TIF and Zcyto18. IL-22 is produced by a variety of cells including TH1, TH17, TH22 T-cells, NKT cells, ILC3, neutrophils and macrophages. IL-22 targets primarily non-hemopoietic cells such as stromal and epithelial cells. IL-22 has both protective effects, such as hepatocyte and epithelial cell survival, and pro-inflammatory effects. It is also implicated in autoimmune diseases such as Systemic Lupus Erythematosus, Rheumatoid Arthritis and Psoriasis. IL-22 is often considered a hallmark of IL-17 driven immune responses.

Human IL-22 ELISA (Cat. No. 41701)

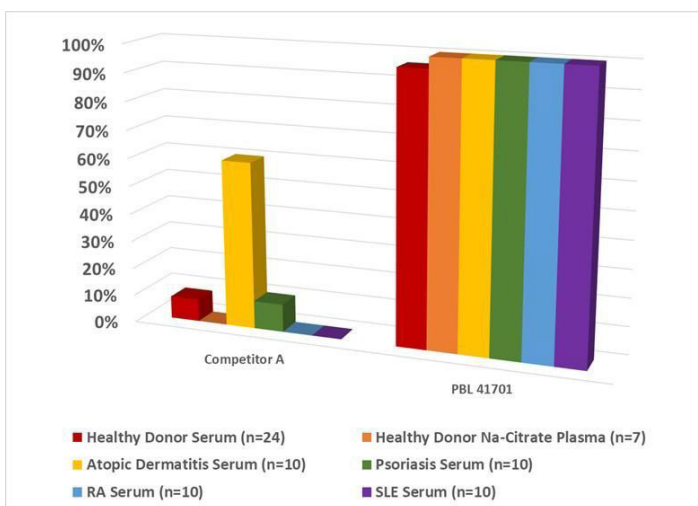
High Sensitivity

- Sub-picogram LLOQ (assay range 0.78 - 50 pg/ml) provides accurate quantification of Human IL-22 levels in healthy and disease sera samples
- Robust matrix tolerance in serum, plasma and tissue culture media, including different IL-22 related disease sera
- Inter- and intra-assay CVs of < 10% provide consistent and reproducible results

Table 1. 41701 exhibits high detectability of endogenous IL-22 in autoimmune / IL-22 related disease sera

Disease Patient Serum	% IL-22 Detectability (n=10 each)	IL-22 Conc Range (pg/ml)	Mean IL-22 Conc (pg/ml)	% CV
Atopic Dermatitis	100%	2.30 - 32.16	14.77	2.14%
Psoriasis	100%	1.25 - 25.99	5.13	3.82%
Rheumatoid Arthritis	100%	1.98 - 9.47	5.58	3.66%
Systemic Lupus Erythematosus	100%	1.55 - 9.22	3.13	4.70%

Figure 3. Competitive Comparison for Healthy and Disease Sera Readability between 41701 and Competitor A



Cat. No.	Description	Size
41701-1	VeriKine-HS Human IL-22 ELISA Kit	1 x 96-well plate



Human Interleukin 15 (IL-15) ELISA

Accurately detect and measure human IL-15 in serum, plasma, or Tissue Culture Media at an improved level of sensitivity.

Interleukin-15 (IL-15) is a member of the IL-2 family of cytokines which also includes IL-4, -7, -9 and -21. It has similar and unique functions compared to IL-2. Signaling by IL-15 can be through the cytokine alone, in complex with soluble IL-15R α and transpresented bound to IL15R α . It is produced largely by monocytic cells but also by dendritic cells, keratinocytes, fibroblasts, myocytes, and nerve cells. It seems to enhance the expansion of CD8 memory cells, NK and NK-T cells. IL-15 plays a role in tumor biology and autoimmune diseases including Psoriasis, Rheumatoid Arthritis, Inflammatory Bowel Disease, Celiac Disease, Alopecia Areata and Systemic Lupus Erythematosus.

Human IL-15 ELISA (Cat. No. 41702)

High Sensitivity

- Sub-picogram LLOQ (assay range 0.51-32.8 pg/ml) provides measurement at or near basal levels of human IL-15 in different sample matrices
- Unique antibodies allow detection of both free and bound forms of IL-15 (IL-15/IL-15R α complex)
- Robust matrix tolerance compatible with serum, plasma, and tissue culture media
- Inter- and intra-assay CVs of < 10% provide consistent and reproducible results

Figure 4. Comparative standard curves of 41702 with competitor IL-15 ELISAs

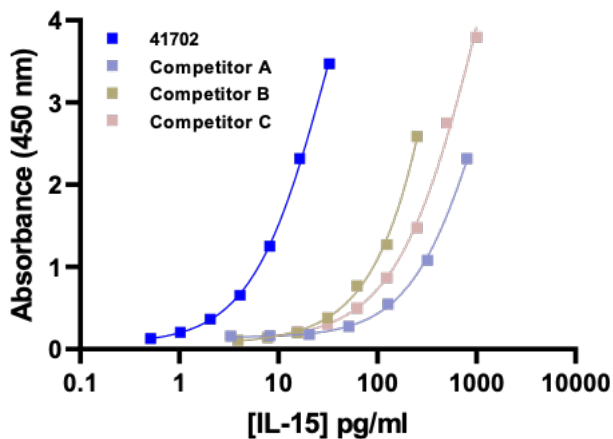
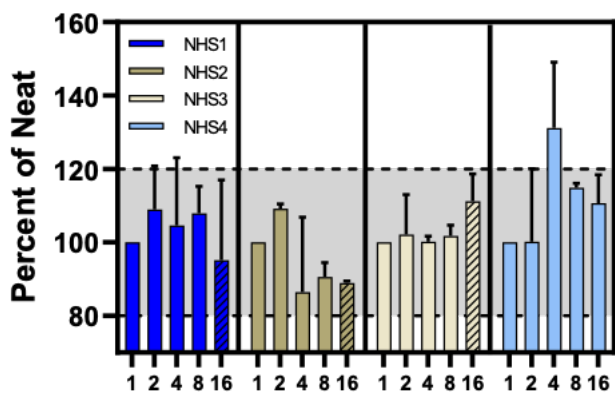
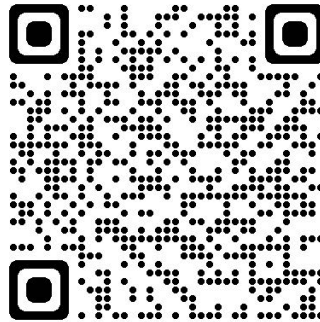


Figure 5. 41702 Assay Parallelism Performance with Healthy Donor Serum



Cat. No.	Description	Size
41702-1	VeriKine-HS Human IL-15 ELISA Kit	1 x 96-well plate





your first choice for scientific solutions

www.stratech.co.uk

+44 (0) 1638 782600

orders@stratech.co.uk

 @stratech_uk

 @stratechscientificltd

 @stratech-scientific-ltd

free delivery
for uk
universities



we offer a
full product
guarantee



outstanding
technical
support



www.stratech.co.uk/pbl