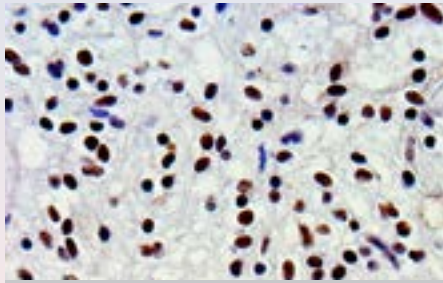
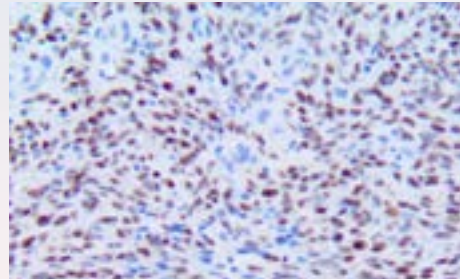


ANTIBODY PROTOCOLS FOR AUTOMATED SYSTEMS

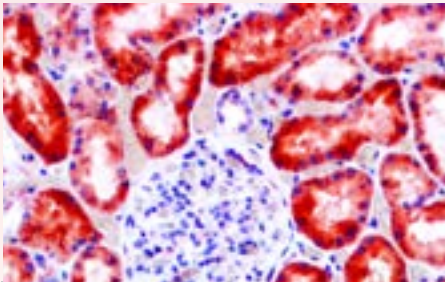
Optimized Protocols for Leica Bond Automated IHC System



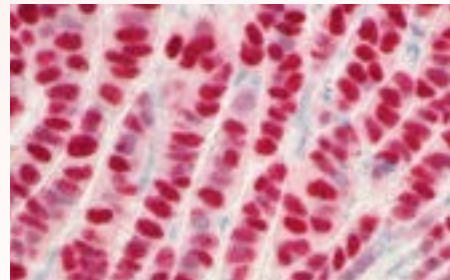
IHC of ATRX on FFPE
Astrocytoma Tissue



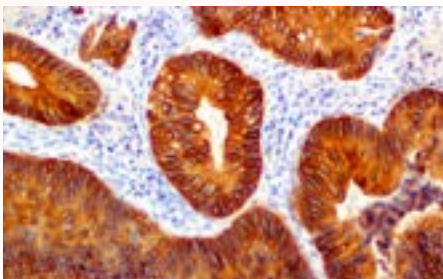
IHC of HHV-8 on FFPE
Kaposi's Sarcoma Tissue



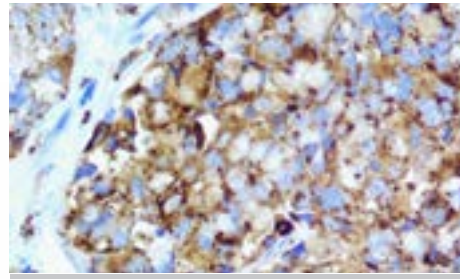
IHC of AMACR on FFPE
Kidney Tissue



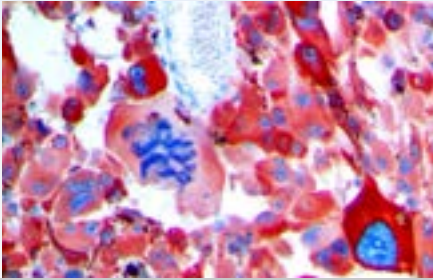
IHC of Estrogen Receptor on FFPE
Breast Tissue



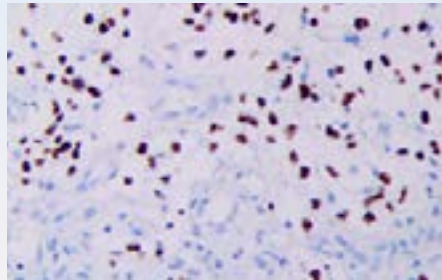
IHC of Cytokeratin 20 on
FFPE Colon Adenocarcinoma Tissue



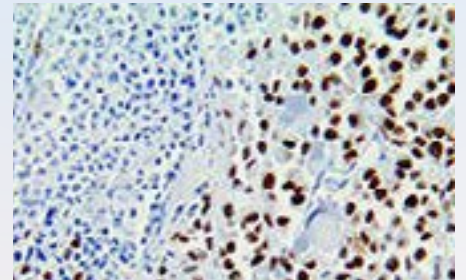
IHC of Napsin A on FFPE
Lung Adenocarcinoma Tissue



**IHC of S100 on FFPE
Melanoma Tissue**



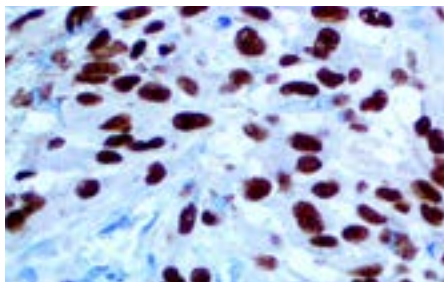
**IHC of OLIG2 on FFPE
Neuroblastoma Tissue**



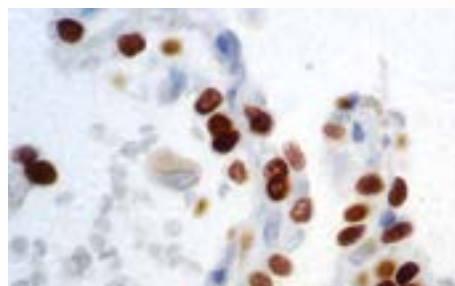
**IHC of PRAME on FFPE
Melanoma Tissue**

Bio SB performs R&D, production, distribution and marketing of unique products for IHC, ICC, FISH and CISH that meet the highest international standards for applications in Molecular Pathology, Cancer Diagnostics & Research, Microbiology, Immunology and Genetics.

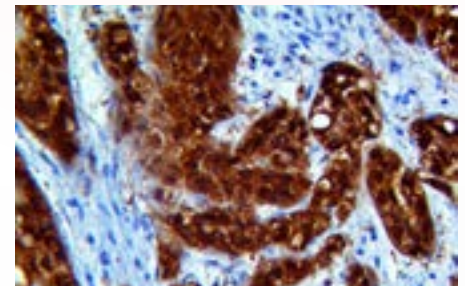
BIO SB manufactures and develops products in accordance with FDA QSR 21 CFR Part 820 cGMP, CE/IVD and ISO 13485:2016 standards. These guidelines enable us to produce an IVD product that meets the highest in vitro diagnostic standards.



**IHC of SOX-10 on
FFPE Melanoma Tissue**



**IHC of TTF-1 on FFPE
Lung Tissue**



**IHC of p16 on FFPE
Transition Cell Carcinoma Tissue**

Bio SB Inc.

**5385 Hollister Ave., Building 8, #108, Santa Barbara, CA 93111, USA
Tel (USA): 1-800-561-1145 | Tel (Int): +1-805-692-2768 | Fax: 805-692-2769
E-mail: sales@biosb.com | Website: www.biosb.com**

Antibody Name	Dilution	Dewax Temperature	Type of Retrieval	Retrieval Time & Temperature	Peroxidase Block Time at Room Temperature	Antibody Time at Room Temperature	Post Antibody Time at Room Temperature	Polymer, Time at Room Temperature	Chromogen Time at Room Temperature	Hematoxylin Time at Room Temperature
AMACRacemase/P504S (13H4), RMab	RTU	72 °C	ER 2- EDTA	100°C x 20 min	5 min	15 min	8 min	8 min	DAB, 10 min	5 min
Arginase-1 (EP261), RMab	RTU	72 °C	ER 2- EDTA	100°C x 20 min	5 min	15 min	8 min	8 min	DAB, 10 min	5 min
ATRX (BSB-108), MMab	RTU	72 °C	ER 2- EDTA	100°C x 20 min	5 min	15 min	8 min	8 min	DAB, 10 min	5 min
BAP1 (BSB-109), MMab	RTU	72 °C	ER 2- EDTA	100°C x 20 min	5 min	15 min	8 min	8 min	DAB, 10 min	5 min
Caldesmon (BSB-19), MMab	RTU	72 °C	ER 1- Citrate	100°C x 20 min	5 min	15 min	8 min	8 min	DAB, 10 min	5 min
Carbonic Anhydrase 9 (EP161), RMab	RTU	72 °C	ER 1- Citrate	100°C x 20 min	5 min	15 min	8 min	8 min	DAB, 10 min	5 min
CD10 (56C6), MMab	RTU	72 °C	ER 2- EDTA	100°C x 30 min	5 min	30 min	8 min	8 min	DAB, 10 min	5 min
CD117 (EP10), RMab	RTU	72 °C	ER 1- Citrate	100°C x 20 min	5 min	15 min	8 min	8 min	DAB, 10 min	5 min
CD20 (L26), MMab	RTU	72 °C	ER 1- Citrate	100°C x 20 min	5 min	15 min	8 min	8 min	DAB, 10 min	5 min
CD21 (EP64), RMab	RTU	72 °C	ER 1- Citrate	100°C x 20 min	5 min	15 min	8 min	8 min	DAB, 10 min	5 min
CD3 (RBT-CD3), RMab	RTU	72 °C	ER 1- Citrate	100°C x 20 min	5 min	15 min	8 min	8 min	DAB, 10 min	5 min
CD34 (QBEnd/10), MMab	RTU	72 °C	ER 1- Citrate	100°C x 20 min	5 min	15 min	8 min	8 min	DAB, 10 min	5 min
CDK4 (EP180), RMab	RTU	72 °C	ER 2- EDTA	100°C x 20 min	5 min	15 min	8 min	8 min	DAB, 10 min	5 min
CDX2 (EP25), RMab	RTU	72 °C	ER 2- EDTA	100°C x 20 min	5 min	15 min	8 min	8 min	DAB, 10 min	5 min
Chromogranin A (LK2H10), MMab	RTU	72 °C	ER 1- Citrate	100°C x 20 min	5 min	15 min	8 min	8 min	DAB, 10 min	5 min
Cytokeratin 7 (OV-TL 12/30), MMab	RTU	72 °C	ER 1- Citrate	100°C x 20 min	5 min	15 min	8 min	8 min	DAB, 10 min	5 min
Cytokeratin Cocktail AE1 & AE3 (AE1 & AE3), MMab	RTU	72 °C	ER 1- Citrate	100°C x 20 min	5 min	15 min	8 min	8 min	DAB, 10 min	5 min
Cytokeratin HMW 34BE12 (34BetaE12), MMab	RTU	72 °C	ER 1- Citrate	100°C x 20 min	5 min	15 min	8 min	8 min	DAB, 10 min	5 min
Cytokeratin LMW CAM5.2 (CAM5.2), MMab	RTU	72 °C	ER 1- Citrate	100°C x 20 min	5 min	15 min	8 min	8 min	DAB, 10 min	5 min
Cytokeratin OSCAR (OSCAR), MMab	RTU	72 °C	ER 1- Citrate	100°C x 20 min	5 min	15 min	8 min	8 min	DAB, 10 min	5 min
Cytomegalovirus (8B1.2, 1G5.2 & 2D4.2), MMab	RTU	72 °C	ER 1- Citrate	100°C x 20 min	5 min	15 min	8 min	8 min	DAB, 10 min	5 min
Estrogen Receptor (BSB-1), MMab	RTU	72 °C	ER 2- EDTA	100°C x 30 min	5 min	30 min	8 min	8 min	DAB, 10 min	5 min
Estrogen Receptor (RM292), RMab	RTU	72 °C	ER 1- Citrate	100°C x 20 min	5 min	15 min	8 min	8 min	DAB, 10 min	5 min
Fli-1 (G146-222), MMab	RTU	72 °C	ER 2- EDTA	100°C x 20 min	5 min	15 min	8 min	8 min	DAB, 10 min	5 min
GATA3 (EP368), RMab	RTU	72 °C	ER 2- EDTA	100°C x 20 min	5 min	15 min	8 min	8 min	DAB, 10 min	5 min
GATA3 (L50-823), MMab	RTU	72 °C	ER 2- EDTA	100°C x 20 min	5 min	15 min	8 min	8 min	DAB, 10 min	5 min
Helicobacter Pylori (EP279), RMab	RTU	72 °C	ER 1- Citrate	100°C x 20 min	5 min	15 min	8 min	8 min	DAB, 10 min	5 min
Hepatocyte Specific Antigen/ Hep-Par1 (OCH1E5), MMab	RTU	72 °C	ER 1- Citrate	100°C x 20 min	5 min	15 min	8 min	8 min	DAB, 10 min	5 min
HER neu (EP3)	RTU	72 °C	ER 1- Citrate	100°C x 20 min	5 min	15 min	8 min	8 min	DAB, 10 min	5 min
HER-2 neu (RBT-HER2), RMab	RTU	72 °C	ER 2- EDTA	100°C x 20 min	5 min	15 min	8 min	8 min	DAB, 10 min	5 min
Herpes Simplex Virus I & II (10A3 & BSB-116), MMab	RTU	72 °C	ER 1- Citrate	100°C x 20 min	5 min	15 min	8 min	8 min	DAB, 10 min	5 min
Herpes Simplex Virus I & II (Polyclonal), RPab	RTU	72 °C	ER 1- Citrate	100°C x 20 min	5 min	15 min	8 min	8 min	DAB, 10 min	5 min
HHV-8 (13B10), MMab	RTU	72 °C	ER 1- Citrate	100°C x 20 min	5 min	15 min	8 min	8 min	DAB, 10 min	5 min
IDH1 R132H (IHC132), MMab	RTU	72 °C	ER 1- Citrate	100°C x 20 min	5 min	15 min	8 min	8 min	DAB, 10 min	5 min

Optimized Protocols for Leica Bond Automated IHC System



Antibody Name	Dilution	Dewax Temperature	Type of Retrieval	Retrieval Time & Temperature	Peroxidase Block Time at Room Temperature	Antibody Time at Room Temperature	Post Antibody Time at Room Temperature	Polymer, Time at Room Temperature	Chromogen Time at Room Temperature	Hematoxylin Time at Room Temperature
INI-1 (25), MMab	RTU	72 °C	ER 2- EDTA	100°C x 20 min	5 min	15 min	8 min	8 min	DAB, 10 min	5 min
INSM1 (BSB-123), MMab	RTU	72 °C	ER 2- EDTA	100°C x 20 min	5 min	15 min	8 min	8 min	DAB, 10 min	5 min
Ki-67 (EP5), RMab	RTU	72 °C	ER 2- EDTA	100°C x 20 min	5 min	15 min	8 min	8 min	DAB, 10 min	5 min
LEF-1 (EP310), RMab	RTU	72 °C	ER 1- Citrate	100°C x 20 min	5 min	15 min	8 min	8 min	DAB, 10 min	5 min
Mart-1/Melan-A (A103), MMab	RTU	72 °C	ER 1- Citrate	100°C x 20 min	5 min	15 min	8 min	8 min	DAB, 10 min	5 min
Melanosome HMB45 (HMB-45), MMab	RTU	72 °C	ER 1- Citrate	100°C x 20 min	5 min	15 min	8 min	8 min	DAB, 10 min	5 min
MLH1 (G168-728), MMab	RTU	72 °C	ER 2- EDTA	100°C x 20 min	5 min	15 min	8 min	8 min	DAB, 10 min	5 min
MSH2 (RBT-MSH2), RMab	RTU	72 °C	ER 2- EDTA	100°C x 20 min	5 min	15 min	8 min	8 min	DAB, 10 min	5 min
MSH6 (EP49), RMab	RTU	72 °C	ER 2- EDTA	100°C x 20 min	5 min	15 min	8 min	8 min	DAB, 10 min	5 min
MUM1 (EP190), RMab	RTU	72 °C	ER 1- Citrate	100°C x 20 min	5 min	15 min	8 min	8 min	DAB, 10 min	5 min
Napsin A (EP205), RMab	RTU	72 °C	ER 1- Citrate	100°C x 20 min	5 min	15 min	8 min	8 min	DAB, 10 min	5 min
NKX3.1 (EP356), RMab	RTU	72 °C	ER 2- EDTA	100°C x 20 min	5 min	15 min	8 min	8 min	DAB, 10 min	5 min
OLIG2 (EP112), RMab	RTU	72 °C	ER 2- EDTA	100°C x 20 min	5 min	15 min	8 min	8 min	DAB, 10 min	5 min
p16 (16P04, JC2)	RTU	72 °C	ER 1- Citrate	100°C x 20 min	5 min	15 min	8 min	8 min	DAB, 10 min	5 min
p16 (RBT-p16), RMab	RTU	72 °C	ER 1- Citrate	100°C x 20 min	5 min	15 min	8 min	8 min	DAB, 10 min	5 min
p16 (RM267), RMab	RTU	72 °C	ER 1- Citrate	100°C x 30 min	5 min	30 min	8 min	8 min	DAB, 10 min	5 min
p40 (ZR8), RMab	RTU	72 °C	ER 2- EDTA	100°C x 20 min	5 min	15 min	8 min	8 min	DAB, 10 min	5 min
p53 (D07), MMab	RTU	72 °C	ER 1- Citrate	100°C x 20 min	5 min	15 min	8 min	8 min	DAB, 10 min	5 min
p57 (Kp10), MMab	RTU	72 °C	ER 2- EDTA	100°C x 20 min	5 min	15 min	8 min	8 min	DAB, 10 min	5 min
PAX-8 (ZR-1), RMab	RTU	72 °C	ER 2- EDTA	100°C x 20 min	5 min	15 min	8 min	8 min	DAB, 10 min	5 min
Podoplanin/D2-40 (D2-40), MMab	RTU	72 °C	ER 1- Citrate	100°C x 20 min	5 min	15 min	8 min	8 min	DAB, 10 min	5 min
PRAME (RBT-PRAME), RMab	RTU	72 °C	ER 1- Citrate	100°C x 20 min	5 min	15 min	8 min	8 min	DAB, 10 min	5 min
Progesterone Receptor (RBT-22)	RTU	72 °C	ER 1- Citrate	100°C x 20 min	5 min	15 min	8 min	8 min	DAB, 10 min	5 min
S-100 (4C4.9), MMab	RTU	72 °C	ER 1- Citrate	100°C x 20 min	5 min	15 min	8 min	8 min	DAB, 10 min	5 min
SARS-CoV-2 (BSB-134), MMab	RTU	72 °C	ER 1- Citrate	100°C x 20 min	5 min	15 min	8 min	8 min	DAB, 10 min	5 min
SATB2 (EP281), RMab	RTU	72 °C	ER 1- Citrate	100°C x 20 min	5 min	15 min	8 min	8 min	DAB, 10 min	5 min
SOX-10 (EP268), RMab	RTU	72 °C	ER 1- Citrate	100°C x 20 min	5 min	15 min	8 min	8 min	DAB, 10 min	5 min
TCR Beta (BSB-117), MMab	RTU	72 °C	ER 2- EDTA	100°C x 20 min	5 min	15 min	8 min	8 min	DAB, 10 min	5 min
TIA-1 (TIA-1), MMab	RTU	72 °C	ER 1- Citrate	100°C x 20 min	5 min	15 min	8 min	8 min	DAB, 10 min	5 min
Treponema pallidum (Polyclonal), RPaB	RTU	72 °C	ER 1- Citrate	100°C x 20 min	5 min	15 min	8 min	8 min	DAB, 10 min	5 min