

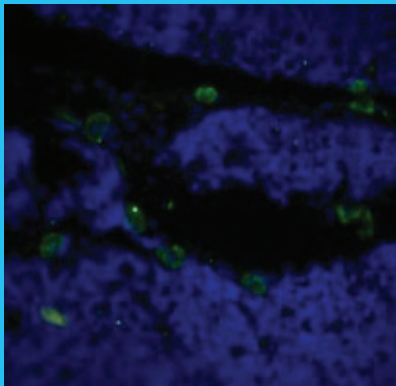


Research-Grade Biosimilars

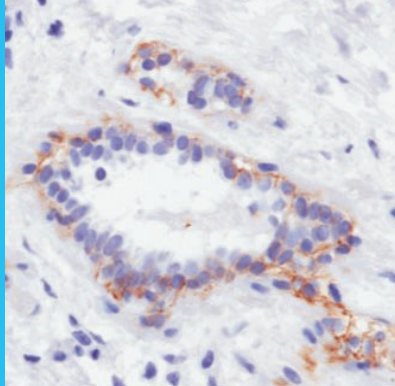
Our research-grade biosimilars enable the study and evaluation of biological processes without the need to source and purchase costly therapeutic-grade biologics. Free of additives found in the therapeutic formulations, our biosimilars require fewer extra controls in an experimental setting. In addition to the original human format, our biosimilars are available with mouse, rabbit, rhesus monkey and cynomolgus monkey constant domains.

Highlighted Biosimilars

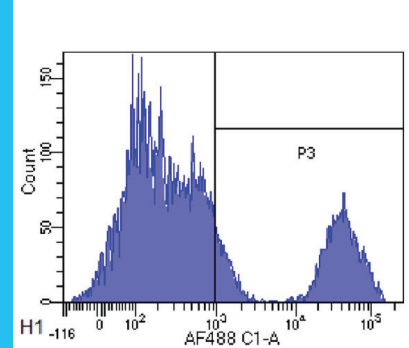
- Bevacizumab (VEGF)
- Campath-1G and 1H (CD52)
- Cetuximab (EGFR)
- Daclizumab (IL-2R)
- Eculizumab (CD5)
- Infliximab (TNF alpha)
- Rituximab (Anti-CD20)
- Tocilizumab (IL-6R)
- Trastuzumab (erbB-2, Her-2/neu)
- Volociximab (alpha 5 beta 1 Integrin)



IF with Anti-CD52 [Campath-1H] (Ab00124).



IHC with Anti-erbB-2 [4D5-8 (trastuzumab)] (Ab00103).



FC with Anti-CD20 [10F381 (rituximab)] (Ab00126).

Why Go Recombinant?

Recombinant engineered biosimilar antibodies from our brand Absolute Antibody, available in diverse formats and species, are essential controls to benchmark novel therapeutics and for the development of potency assays. Our research-grade biosimilars are 100% biologically defined, ensuring your data is reproducible and opening further opportunities for our antibody engineers to customize these tools to your exact experimental needs.



Catalog Number	Antibody	Target	Expected Species Reactivity
Ab00282	Abciximab	CD41	Human
Ab00718	Adalimumab	TNF alpha	Human
Ab00281	Arcitumomab	Carcinoembryonic antigen (CEA)	Human
Ab00188	Basiliximab	IL-2R alpha (CD25)	Human; Rhesus Monkey; Cynomolgus Monkey
Ab00715	Bevacizumab	VEGF	Human
Ab00722	Briakinumab	IL-12/23	Human
Ab00165 & Ab00124	Campath-1G and 1H	CD52	Human; Rhesus Monkey; Cynomolgus Monkey
Ab00194	Campath-6	CD25	Human
Ab00167	Campath-9H	CD4	Human
Ab00279	Cetuximab	EGFR	Human
Ab00450	Clenoliximab	CD4	Human; Chimpanzee
Ab00187	Daclizumab	IL-2R	Human; Rhesus Monkey; Cynomolgus Monkey
Ab00740	Drozitumab	DR5	Human
Ab00296	Eculizumab	C5	Human
Ab00535	Efalizumab	CD11a	Human
Ab00898	EP3-1	CD98	Human
Ab00728	Epratuzumab	CD22	Human; Rhesus Monkey; Cynomolgus Monkey
Ab00729	Felvizumab	RSV	RSV
Ab00736	Galiximab	CD80	Human
Ab00283	Gemtuzumab	CD33	Human
Ab00448	Humicade	TNF alpha	Human
Ab00146	Infliximab	TNF alpha	Human
Ab00846	JOVI.1	V(beta)3 TCR	Human
Ab00534	Matuzumab	EGFR	Human
Ab01147	Minretumomab	TAG-72	Human
Ab00726	Mogamulizumab	CCR4	Human
Ab00217	MT310	CD4	Human; Rhesus Monkey; Cynomolgus Monkey
Ab00122	Muromonab	CD3 epsilon	Human
Ab00716	Natalizumab	Integrin alpha 4	Human
Ab00723	Nimotuzumab	EGFR domain III	Human
Ab00791	Nivolumab	PD-1	Human; Cynomolgus Monkey
Ab00717	Omalizumab	IgE	Human
Ab00536	Oxelumab	OX40L	Human
Ab00773	Pateclizumab	Lymphotoxin alpha	Human
Ab00802	R-125224	Fas	Human
Ab00126	Rituximab	CD20	Human; Rhesus Monkey; Cynomolgus Monkey
Ab00447	Ruplizumab	CD40L	Human
Ab00280	Satumomab	Tumor associated glycoprotein (TAG) 72	Human
Ab00958	Tabalumab	CD257 (BAFF)	Human; Cynomolgus Monkey; Rabbit
Ab00497	TES-C21	IgE	Human
Ab00737	Tocilizumab	IL-6R	Human
Ab01678	Toralizumab	CD154	Human
Ab00103	Trastuzumab	erbB-2 (Her-2/neu)	Human
Ab00449	Volociximab	alpha 5 beta 1 Integrin	Human
Ab01677	Zalutumumab	EGFR	Human
Ab01274	2-D03	oxLDL	Human