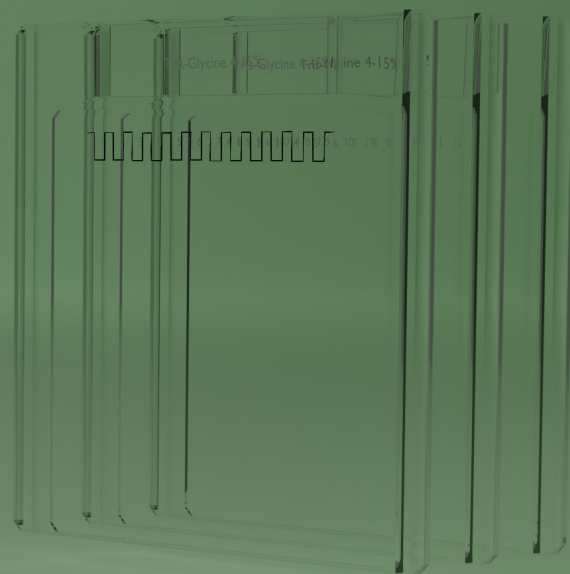


10 gel cassettes

NZY Precast Gels

Simplify your lab workflow with ready-to-use SDS-PAGE gels for precise and reliable electrophoresis

Accelerate your experiments effortlessly with our precast gels. Meticulously designed for fast protein separation.



NZY Tris-Glycine Precast Gel 4-15%

NZY Bis-Tris Precast Gel 4-12%

Crafted for optimal performance and easy storage, these ready-to-use acrylamide gels streamline the electrophoresis process, making it a seamless experience for your research needs. This reduction in uncertainties and improved efficiency in workflow allows you to focus on what matters most in the lab - results.



Ready-to-Use



Easy Buffer
Compatibility

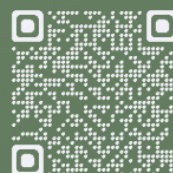


User Friendly
Gel Cassette



RT
Shipping

Stratech



www.stratech.co.uk

info@stratech.co.uk

+44 (0) 1638 782600

[@stratech_uk](https://twitter.com/stratech_uk)

[@stratech-scientific-ltd](https://www.linkedin.com/company/stratech-scientific-ltd)

[@stratech.scientific](https://www.instagram.com/stratech.scientific)

Fast-Track Lab Productivity

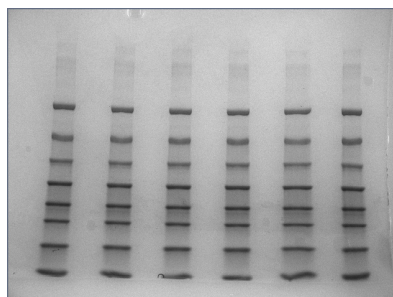


Accelerate Workflows with Streamlined Precast Gel Solutions

Imagine a lab where your tasks are completed faster, uncertainties are minimized and results are obtained with confidence. Envision the hours saved without compromising on quality. With NZY Tris-Glycine Precast Gel and NZY Bis-Tris Precast Gel, you're stepping into a realm of streamlined efficiency that lets you breeze through your experiments.

NZY Tris-Glycine Precast Gel 4-15%

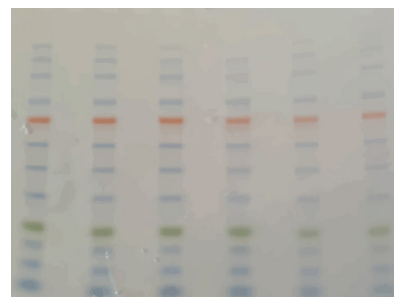
Boost your protein analysis with NZY Tris-Glycine Precast Gel. This precast gel's 4-15% gradient expedites separation, saving crucial time in your experiments. Get clear-cut bands every time, removing ambiguity and enhancing data reliability. NZY Tris-Glycine Precast Gel simplifies your workflow, letting you focus on what truly matters - results.



NZY Tris-Glycine Precast Gel, 4-15%. Migration pattern of LMW II (MB214).

NZY Bis-Tris Precast Gel 4-12%

Make protein analysis effortless using the NZY Bis-Tris Precast Gel. This 4-12% gel range expedites separation, offering speedy and clear insights. Leave behind lengthy procedures and usher in an efficient workflow. The NZY Bis-Tris Precast Gel accelerates your analysis and uncertainties in your experiments.



NZY Bis-Tris Precast Gel 4-12%. Migration pattern of NZYColour Protein Marker II (MB090)

NZY Tris-Glycine Precast Gel

- Enhanced gel electrophoresis speed
- Better band separation
- Stable for shipping at ambient temperature

NZY Bis-Tris Precast Gel

- Enhanced band sharpness
- Better resolution of small proteins
- Stable for shipping at ambient temperature

NZY Tris-Glycine

NZY Bis-Tris

Product Number	MB46601	MB46501
Gel Percentages	4-15%	4-12%
Gel Dimensions	Mini (10 x 8.3 cm)	Mini (10 x 8.3 cm)
Well Format	12 Wells	12 Wells
Run time	30-40 min. - 200V	15-30 min. - 230V
Capacity	25 µL/well	25 µL/well
Presentation	10 gels	10 gels
Recommended Buffer	Tris-Glycine Buffer (MB194)	NZY 1X MOPS-SDS Buffer Powder (MB467)
Recommended Marker	LMW II (MB214)	NZYColour Protein Marker II (MB090)

Accelerate your progress, reduce uncertainties and take the next step towards effortless results.

Contact us now to streamline your lab with these exceptional precast gels.

Request a Sample

