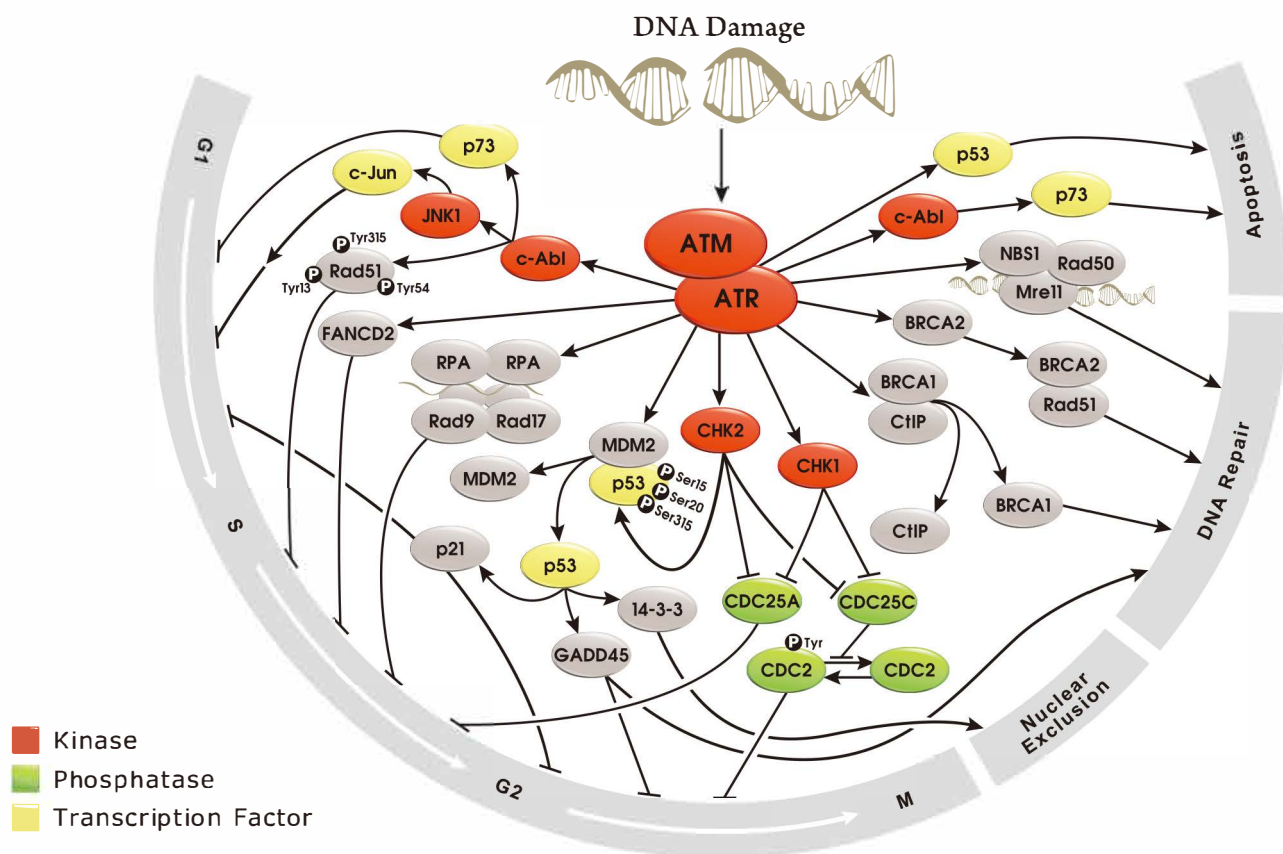


# DNA Damage and Repair

Your Expertise

Our Antibodies

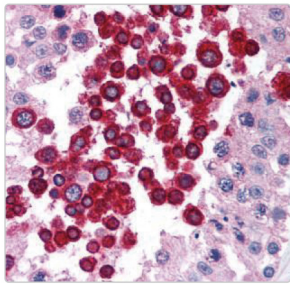
Accelerated Discovery



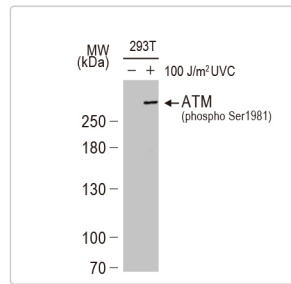
Mammalian DNA is constantly being compromised by various endogenous and exogenous insults. This damage can include crosslinks, base modifications, base mismatches, stalled replication forks, single-strand breaks (SSBs), and particularly dangerous double-strand breaks (DSBs). The magnitude of this assault on the genome is conveyed by the fact that a cell can experience at least 10,000 SSBs per day, with unrepaired lesions potentially being converted to DSBs. Fortunately, eukaryotes possess an array of distinct but often interlinked pathways to detect and repair damaged DNA, including base excision repair (BER), nucleotide excision repair (NER), mismatch repair (MMR), single-strand break repair (SSBR), non-homologous end joining (NHEJ), and homologous recombination (HR), among others. In addition to these, checkpoints can arrest cell cycle progression to allow for DNA repair and prevent transmission of damaged DNA to daughter cells. The overriding goal of these mechanisms is the preservation of genomic integrity.

GeneTex offers an outstanding selection of antibodies to support DNA damage and repair research. Please see our highlighted antibodies or visit our website for the full catalog.

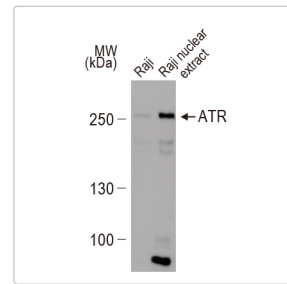




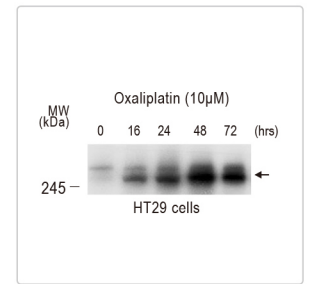
ATM antibody [2C1]  
(GTX70103)



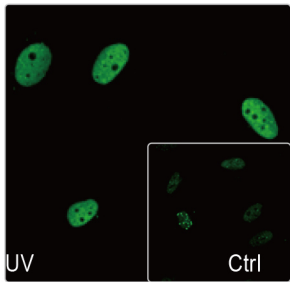
ATM (pSer1981)  
antibody (GTX132146)



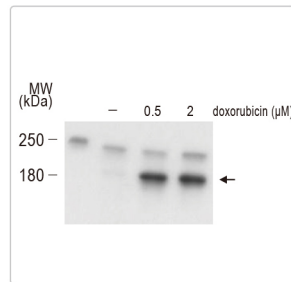
ATR antibody [2B5]  
(GTX70109)



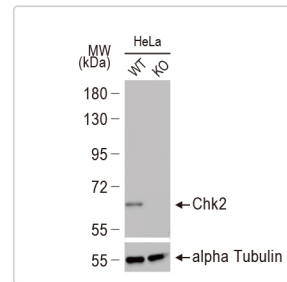
ATR (pThr1989) antibody  
(GTX128145)



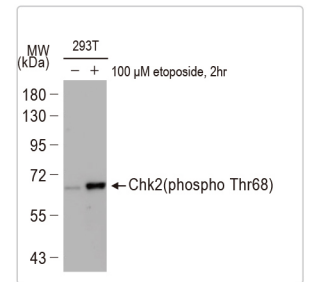
Chk1 (pSer317) antibody  
(GTX132170)



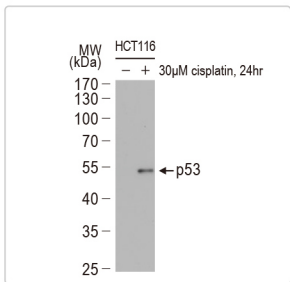
Chk1 (pSer345) antibody  
(GTX100065)



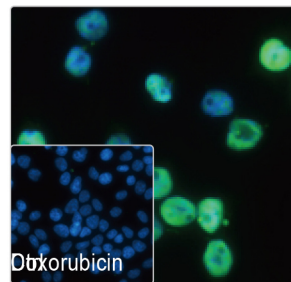
Chk2 antibody [4B8]  
(GTX70100)



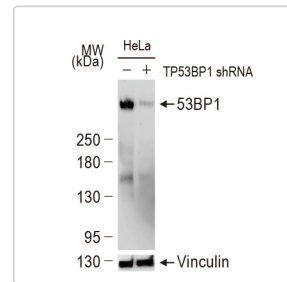
Chk2 (pThr68) antibody  
(GTX132204)



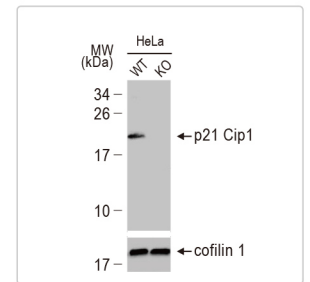
p53 antibody [D01]  
(GTX70214)



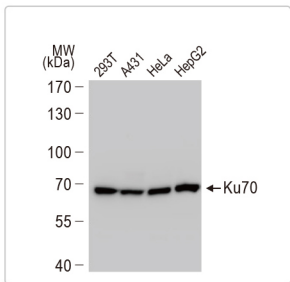
p53 (pSer15) antibody  
(GTX132995)



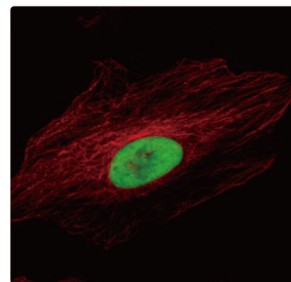
53BP1 antibody  
(GTX70310)



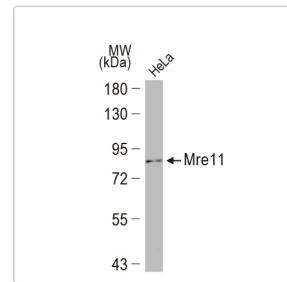
p21 Cip1 antibody [GT1032]  
(GTX629543)



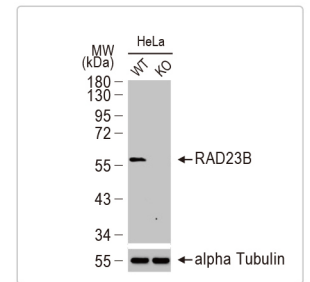
Ku70 antibody  
(GTX101820)



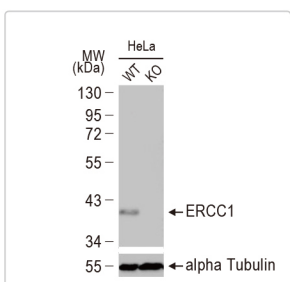
Ku80 antibody  
(GTX109935)



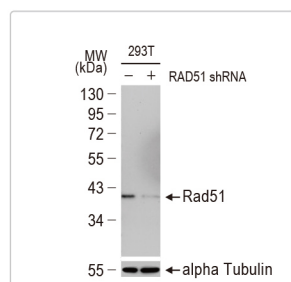
Mre11 antibody [12D7]  
(GTX70212)



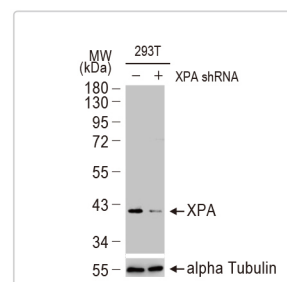
RAD23B antibody  
(GTX113820)



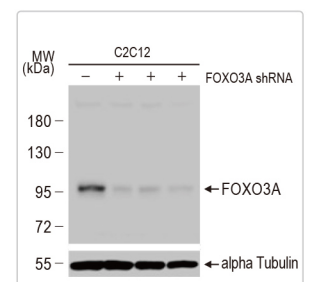
ERCC1 antibody  
(GTX129282)



Rad51 antibody [14B4]  
(GTX70230)



XPA antibody  
(GTX103168)



FOXO3A antibody  
(GTX100277)

Cat. No.	Product Name	Clonality	Reactivity	Applications
 GTX100801	14-3-3 sigma antibody	Rb pAb	Hu, Ms	ICC/IF, IHC-P, IP, WB
 GTX101075	14-3-3 zeta antibody	Rb pAb	Hu, Ms	ICC/IF, IHC-P, WB
 GTX113298	14-3-3 gamma antibody	Rb pAb	Hu, Ms	IP, ICC/IF, WB, IHC-P
 GTX70310	53BP1 antibody	Rb pAb	Hu, Ms	ICC/IF, IHC, WB
GTX60762	53BP1 antibody [6B3E10]	Ms mAb	Hu	ELISA, FACS, IHC-P, WB
  GTX102595	53BP1 antibody [N1], N-term	Rb pAb	Hu, Ms	ICC/IF, IHC-P, WB
  GTX107122	APE1 antibody	Rb pAb	Hu, Ms	IHC-P, WB
 GTX70131	APE1 antibody [2104]	Ms mAb	Hu, Ms	ELISA, IHC-P, WB
  GTX70103	ATM antibody [2C1]	Ms mAb	Hu, Ms, Mk, Rat	ELISA, FACS, ICC/IF, IHC-P, IP, WB, IHC-R, ChIP assay
 GTX70107	ATM antibody [5C2]	Ms mAb	Hu, Ms, Mk, Rat	ICC/IF, IHC, IP, WB
 GTX70109	ATR antibody [2B5]	Ms mAb	Hu	ICC/IF, IP, WB, Functional Assay
 GTX128145	ATR (phospho Thr1989) antibody	Rb pAb	Hu, Ms	IP, ICC/IF, WB, IHC-P
GTX133852	ATR (phospho Ser428) antibody	Rb pAb	Hu	WB
  GTX101310	ATRX antibody [C3], C-term	Rb pAb	Hu, Ms, Rat	IP, ICC/IF, WB, IHC-P
  GTX629703	ATRX antibody [GT4212]	Ms mAb	Hu, Ms	ICC/IF, WB
 GTX109683	Bax antibody [N1N2], N-term	Rb pAb	Hu, Rat	ICC/IF, IHC-P, IP, WB
 GTX100064	Bcl-2 antibody [N1N2], N-term	Rb pAb	Hu, Ms, Rat	IHC-P, WB
 GTX101303	BLM antibody [C3], C-term	Rb pAb	Hu, Ms	ICC/IF, IHC-P, WB
  GTX70111	BRCA1 antibody [17F8] - ChIP grade	Ms mAb	Hu, Ms	ELISA, ICC/IF, IHC, IHC-P, IP, WB, ChIP assay
  GTX70115	BRCA1 antibody [6B4] - ChIP grade	Ms mAb	Hu, Ms	ICC/IF, IHC, IHC-P, IP, WB, ChIP assay
  GTX70113	BRCA1 antibody [8F7]	Ms mAb	Hu, Ms	IHC, IHC-P, IP, WB
 GTX70123	BRCA2 antibody [5F6]	Ms mAb	Hu	IHC, IHC-Fr, IHC-P, WB
 GTX111317	c-Abl antibody	Rb pAb	Hu	ICC/IF, IHC-P, WB
GTX133980	c-Abl (phospho Tyr245) antibody	Rb pAb	Hu	WB
 GTX102809	CDC25C antibody	Rb pAb	Hu	ICC/IF, IHC-P, WB
 GTX100070	Chk1 antibody [C1C2-6], Internal	Rb pAb	Hu	ICC/IF, IHC-P, WB
GTX132170	Chk1 (phospho Ser317) antibody	Rb pAb	Hu	ICC/IF, WB
 GTX100065	Chk1 (phospho Ser345) antibody [C1C2], Internal	Rb pAb	Hu, Ms	ICC/IF, IHC-P, WB
 GTX70100	Chk2 antibody [4B8]	Ms mAb	Hu	IP, WB
GTX133989	Chk2 (phospho Ser19) antibody	Rb pAb	Hu	WB
 GTX132204	Chk2 (phospho Thr68) antibody	Rb pAb	Hu	WB
 GTX70264	CtIP antibody [19E8]	Ms mAb	Hu, Ms	ICC/IF, IP, WB, ChIP assay, PLA
 GTX70141	DNA ligase I antibody [10H5]	Ms mAb	Hu, Ms	IP, WB
 GTX70143	DNA ligase III antibody [1F3]	Ms mAb	Hu, Ms, Chk	Blocking, ICC/IF, IP, WB, PLA
GTX100398	DNA polymerase gamma antibody	Rb pAb	Hu, Rat	IP, ICC/IF, WB, IHC-P
GTX113247	DNA polymerase gamma antibody [N1N2], N-term	Rb pAb	Hu, Rat	IHC-P, WB
 GTX129282	ERCC1 antibody	Rb pAb	Hu, Rat	ICC/IF, IHC-P, WB
 GTX100145	ERCC8 antibody [N2C2], Internal	Rb pAb	Hu, Ms	ICC/IF, WB, Functional Assay
  GTX100277	FOXO3A antibody [C3], C-term	Rb pAb	Hu, Ms	ICC/IF, IHC-P, IP, WB
GTX103424	RAD23B antibody	Rb pAb	Hu	ICC/IF, IHC-P, WB
 GTX127340	Histone H2A.XS139ph (phospho Ser139) antibody	Rb pAb	Hu, Ms, Rat, Zfsh	ICC/IF, IHC-P, WB
 GTX628789	Histone H2A.XS139ph (phospho Ser139) antibody [GT2311]	Ms mAb	Hu, Ms, Rat	ICC/IF, IHC-P, IP, WB
  GTX101277	HMGB1 antibody	Rb pAb	Hu, Ms, Pig, Rat	ICC/IF, IHC, IHC-P, WB
GTX629478	HMGA2 antibody [GT763]	Ms mAb	Hu, Ms, Rat	ICC/IF, IHC-P, IP, WB
GTX101820	Ku70 antibody	Rb pAb	Hu	ICC/IF, IHC-P, IP, WB
 GTX70276	Ku80 antibody [149.8]	Ms mAb	Hu	ICC/IF, WB

Cat. No.	Product Name	Clonality	Reactivity	Applications
 GTX109935	Ku80 antibody [N3C2], Internal	Rb pAb	Hu, Ms, Rat	ICC/IF, IHC-P, IP, WB
 GTX100531	MDM2 antibody	Rb pAb	Hu, Ms	IP, ChIP assay, WB, IHC-P
 GTX133996	MDM2 (phospho Ser166) antibody	Rb pAb	Hu	WB
 GTX77723	MDMX antibody, N-term	Rb pAb	Hu	WB
 GTX110551	MGMT antibody	Rb pAb	Hu	IP, WB
  GTX118741	Mre11 antibody	Rb pAb	Hu, Ms, Rat	ICC/IF, IHC-P, IP, WB, IB
  GTX70212	Mre11 antibody [12D7]	Ms mAb	Hu, Ms, Rat	ELISA, ICC/IF, IHC-P, IP, WB, Functional Assay, PLA
 GTX124131	MSH2 antibody	Rb pAb	Yeast	WB
 GTX73803	MSH6 antibody [44]	Ms mAb	Hu	IHC, IHC-P, WB
  GTX111661	MSH6 antibody [C1C2], Internal	Rb pAb	Hu, Ms, Zfsh	EMSA, ICC/IF, IHC-P, IP, WB
 GTX100082	MUS81 antibody	Rb pAb	Hu, Ms, Rat	ICC/IF, WB
  GTX103229	NBS1 antibody	Rb pAb	Hu	ICC/IF, IP, WB
  GTX70224	NBS1 antibody [1D7]	Ms mAb	Hu, Ms, Rat	ICC/IF, IP, WB
 GTX103322	NRF2 antibody [N2C2], Internal	Rb pAb	Hu, Ms, Rat, Bird	IP, ICC/IF, ChIP assay, IHC, WB, IHC-P
 GTX133883	NBS1 (phospho Ser343) antibody	Rb pAb	Hu	WB
 GTX129607	NEIL1 antibody	Rb pAb	Hu	WB
  GTX629543	p21 Cip1 antibody [GT1032]	Ms mAb	Hu, Ms	ICC/IF, IP, WB
  GTX102965	p53 antibody	Rb pAb	Hu	ICC/IF, IHC-P, IP, WB, ChIP assay
  GTX70214	p53 antibody [D01]	Ms mAb	Hu	ELISA, FACS, ICC/IF, IHC-Fr, IHC-P, IP, WB
 GTX117515	p53 (mono-methyl Lys372) antibody	Rb pAb	Hu, frg	ICC/IF, IHC-P, WB
  GTX100573	PARP antibody	Rb pAb	Hu, Ms, Rat	ICC/IF, IHC-P, IP, WB, in vitro, ChIP assay
  GTX628836	PARP antibody [GT6212]	Ms mAb	Hu, Rat	IHC-P, WB
 GTX132329	PARP (cleaved Asp214) antibody	Rb pAb	Hu	ICC/IF, WB
 GTX106952	PRP19 antibody [C1C3]	Rb pAb	Hu	ICC/IF, IHC-P, WB
 GTX106012	Rad21 antibody	Rb pAb	Hu, Ms	ICC/IF, IHC-P, IP, WB
 GTX113820	RAD23B antibody	Rb pAb	Hu	ICC/IF, IHC-P, WB
  GTX70228	Rad50 antibody [13B3]	Ms mAb	Hu, Ms, Mk, Rat	ICC/IF, IHC, IHC-P, IP, WB
  GTX119731	Rad50 antibody [N1N2], N-term	Rb pAb	Hu, Ms, Rat	IHC-P, IP, WB, IB
  GTX70230	Rad51 antibody [14B4]	Ms mAb	Hu, Ms, Chk	ICC/IF, IHC-P, IP, WB, PLA
  GTX100469	Rad51 antibody [N1C2]	Rb pAb	Hu, Ms, Rat	IP, ICC/IF, WB, IHC-P
 GTX113004	RPA32 antibody	Rb pAb	Hu, Ms, Rat	ICC/IF, IHC-P, WB
 GTX70243	RPA32 antibody [12F3.3]	Ms mAb	Hu, Ms	ICC/IF, IP, WB
 GTX101081	WRN antibody	Rb pAb	Hu	ICC/IF, IHC-P, IP, WB
  GTX103168	XPA antibody	Rb pAb	Hu	ICC/IF, IHC-P, IP, WB
 GTX70294	XPC antibody [3.26]	Ms mAb	Hu, Ms	ICC/IF, IHC-P, WB
 GTX102840	XPC antibody [C2C3], C-term	Rb pAb	Hu	ICC/IF, IHC-P, WB
 GTX109632	XRCC4 antibody	Rb pAb	Hu	ICC/IF, IHC-P, WB
 GTX129285	XPF antibody	Rb pAb	Hu	WB



[www.stratech.co.uk](http://www.stratech.co.uk)

+44 (0) 1638 782600

[orders@stratech.co.uk](mailto:orders@stratech.co.uk)

 @stratech\_uk

 @stratechscientifictd

 @stratech-scientific-ltd