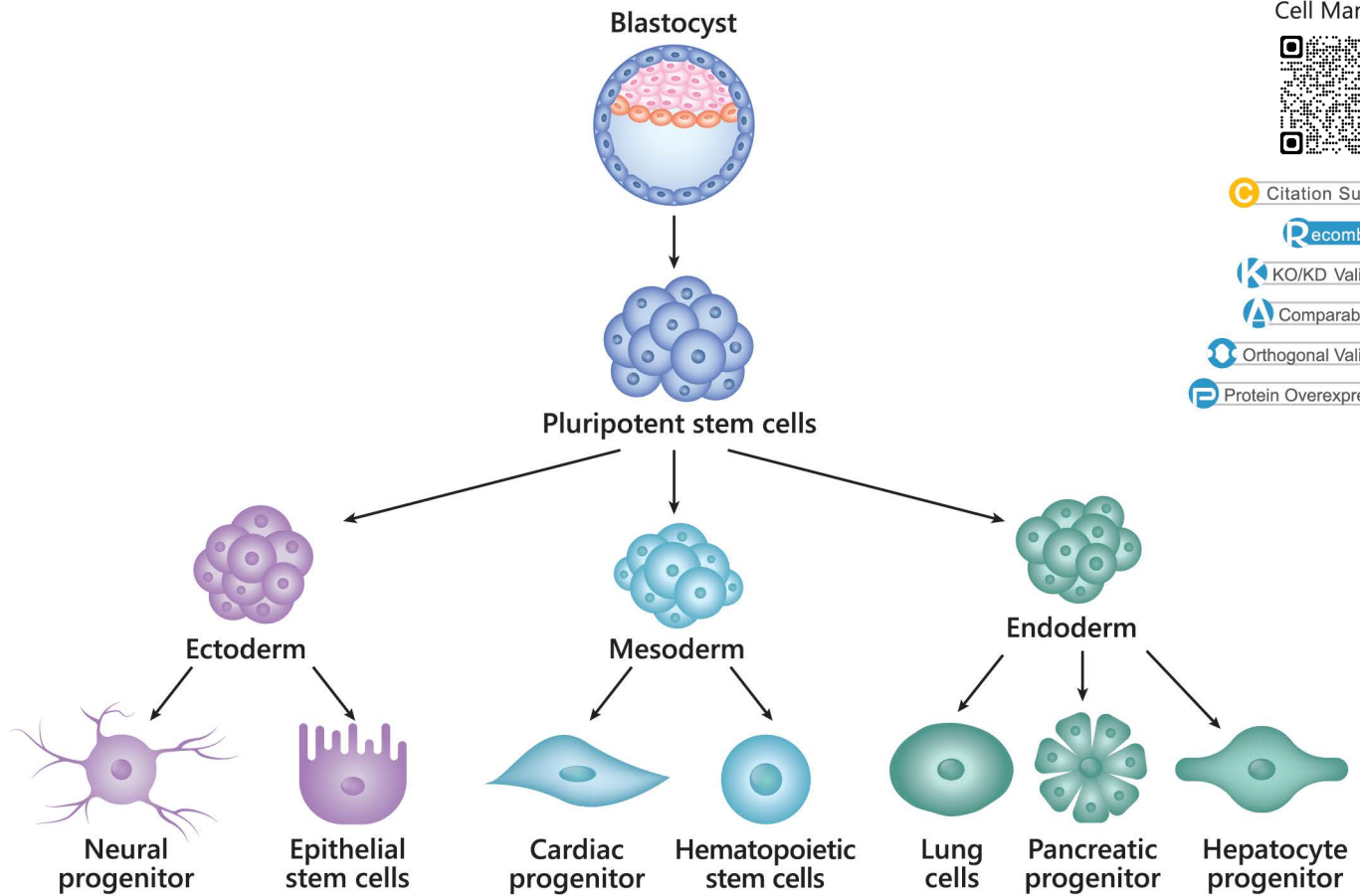




# Recombinant Monoclonal Antibodies for Cell Markers

- Your Expertise
- Our Antibodies
- Accelerated Discovery



Cell Markers



- Citation Support
- Recombinant
- KO/KD Validation
- Comparable Abs
- Orthogonal Validation
- Protein Overexpression

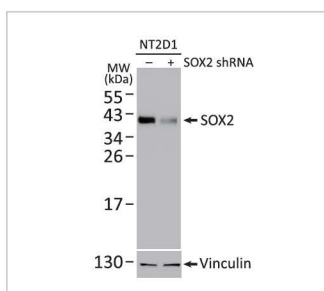
## Advantages of Using GeneTex's Recombinant Rabbit Monoclonal Antibodies

- Superior Sensitivity
- Lower Background Signal
- Scalability and Reproducibility
- Reduction in Animal Usage

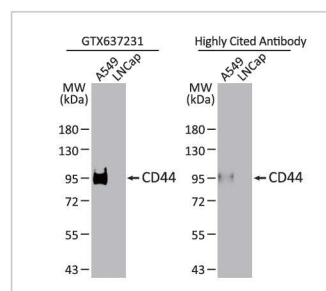
Stem Cell Markers



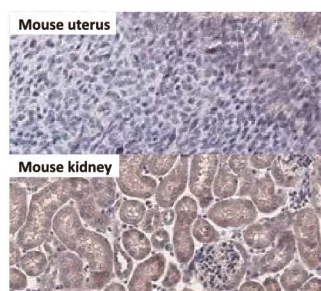
## Stem Cell Markers



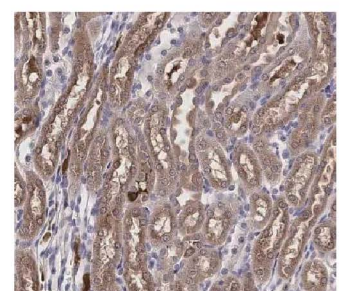
SOX2 antibody [HL1193]  
(GTX636505)



CD44 antibody [HL1650]  
(GTX637231)



CD133 antibody [HL1271]  
(GTX636673)

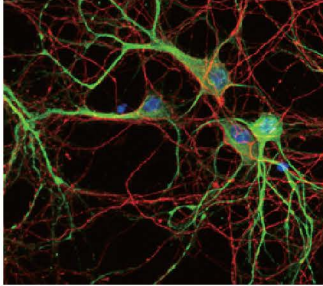


CD34 antibody [HL1895]  
(GTX637644)



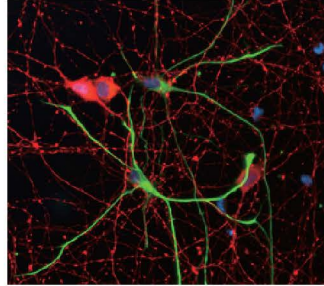
## Neural Markers

### Neurons



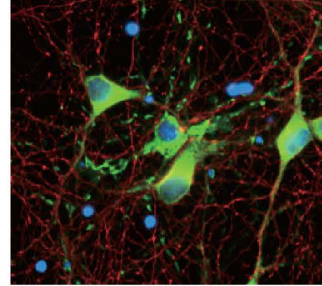
MAP2 antibody [HL1655]  
(GTX637253)

### Astrocytes



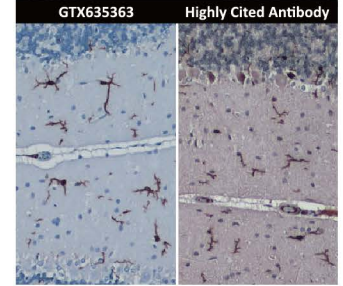
GFAP antibody [HL1308]  
(GTX636726)

### Oligodendrocytes



Myelin Basic Protein antibody [HL1033]  
(GTX635873)

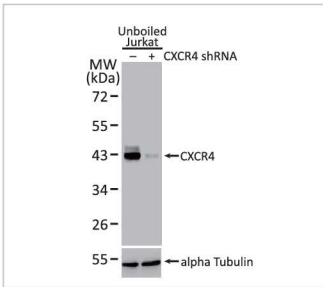
### Microglia



Iba1 antibody [HL22]  
(GTX635363)

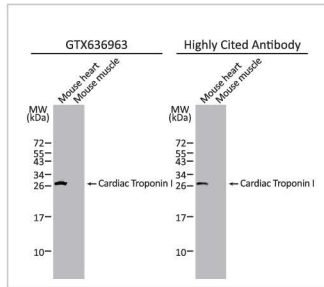
## Other Cell Markers

### Endothelial Cells



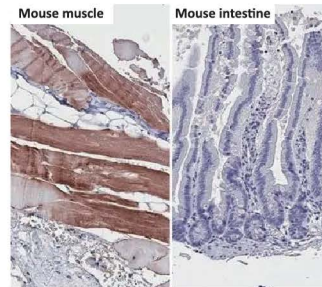
CXCR4 antibody [HL2612]  
(GTX639064)

### Cardiomyocytes



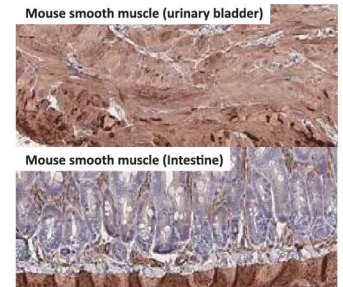
Cardiac Troponin I antibody [HL1489]  
(GTX636963)

### Skeletal Muscle Cells



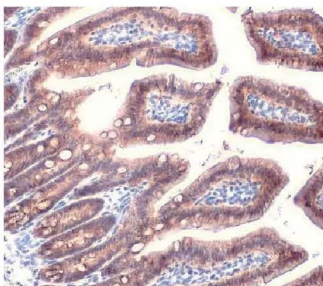
TRIM72 antibody [HL1853]  
(GTX637578)

### Smooth Muscle Cells



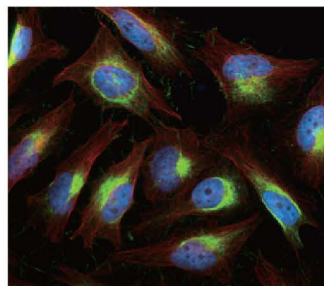
alpha Smooth Muscle Actin antibody [HL1419]  
(GTX636885)

### Epithelial Cells



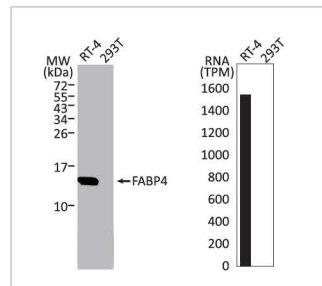
EpCAM antibody [HL1339]  
(GTX636759)

### Fibroblasts



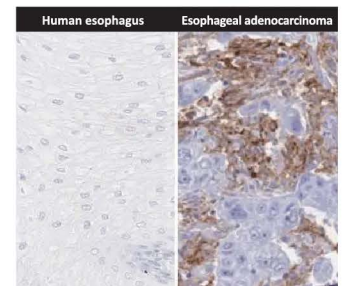
Vimentin antibody [HL1506]  
(GTX636980)

### Adipocytes



FABP4 antibody [HL1521]  
(GTX636995)

### Tumor Markers



PD-L1 antibody [HL1041]  
(GTX635975)

