

Loading Control Antibodies

Your Expertise

Our Antibodies

Accelerated Discovery

www.genetex.com



Loading control antibodies are used routinely to show that equal amounts of different protein samples were loaded into the wells of an SDS-PAGE gel. Selection of an appropriate antibody to detect a protein target whose expression stays consistent under various experimental conditions is essential to make meaningful interpretations of western blot data. Thus, reliable loading control antibodies are of immense importance to the laboratory.

Why Choose GeneTex Loading Control Antibodies?

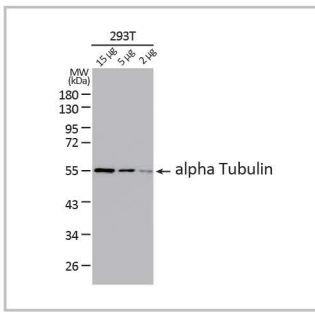
- ✓ Validated in Multiple Species
- ✓ Tested in Various Applications
- ✓ Well-Cited in Publications
- ✓ Products for Every MW Range

MW	Cytosol	Nucleus	Cytoskeleton	Mitochondria	Serum
>80 kDa			Vinculin: 124kDa GTX109749 <i>Oncogenesis</i>		
70-80 kDa		Nuclear Matrix Protein p84: 76kDa GTX102919 <i>EMBO J.</i>		SDHA: 73kDa GTX632635, GTX101689 <i>Commun Biol.</i>	Transferrin: 77kDa GTX112729 <i>GLIA</i>
60-70 kDa		Lamin B1: 66kDa GTX103292 <i>Nat Commun., Cell Rep.</i>		HSP60: 61kDa GTX110089 <i>Phytomedicine</i>	Albumin: 69kDa GTX102419 <i>Nature, Biomaterials</i>
50-60 kDa			alpha Tubulin: 55kDa GTX628802 <i>Nat Commun., Circ Res.</i> beta Tubulin: 50kDa GTX101279 <i>Nat Genet., Nat Commun.</i>		
40-50 kDa			beta Actin: 42kDa GTX629630 <i>Nat Commun., Cell Rep.</i>		
30-40 kDa	GAPDH: 36kDa GTX627408, GTX100118 <i>Cell, Nature</i>	TBP/ TFIID: 38kDa GTX634166		VDAC1: 31kDa GTX114187 <i>Redox Biol., Int. J. Biol. Sci.</i>	
20-30 kDa		PCNA: 29kDa GTX100539 <i>Nat Methods, Nat Commun.</i>		COX4: 20kDa GTX628901 <i>Br J Cancer</i>	
<20 kDa	Cyclophilin A: 18kDa GTX104698 <i>Pharmacol Res.</i>	Histone H3: 15kDa GTX122148 <i>Cancer Cell, Cell Rep.</i>	Cofilin 1: 19kDa GTX632582	Cytochrome C: 12kDa GTX633691, GTX108585 <i>Reproduction</i>	

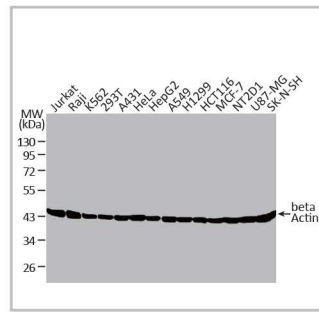
www.GeneTex.com

www.stratech.co.uk/Genetex

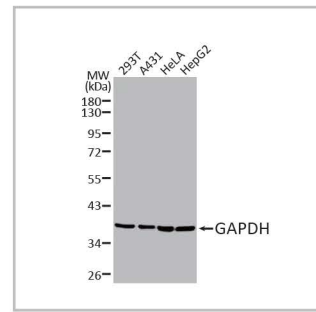
Recombinant Loading Control Antibodies



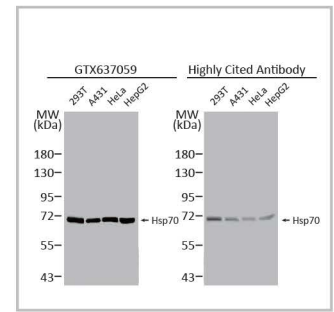
alpha Tubulin antibody [HL2162]
(GTX638140)



beta Actin antibody [HL1926]
(GTX637675)



GAPDH antibody [HL2062]
(GTX637966)



Hsp70 antibody [HL1580]
(GTX637059)

Highlighted Antibodies

Cat. No.	Product Name	Clonality	Reactivity	Applications
GTX634535	Vinculin antibody [GT3210]	Ms mAb	Hu, Ms, Rat	WB, IHC-P
GTX637857	Vinculin antibody [HL1964]	Rec Rb mAb	Hu, Ms, Rat, Cat, Dog	WB, ICC/IF, IHC-P
GTX638745	Transferrin antibody [HL2429]	Rec Rb mAb	Hu, Ms, Rat	WB, IHC-P
GTX102919	Nuclear Matrix Protein p84 antibody [C1C3]	Rb pAb	Hu, Ms, Rat, Bird	WB, ICC/IF, IHC-P, IP, ChIP assay
GTX632636	SDHA antibody [GT20710]	Ms mAb	Hu, Ms, Rat	WB, ICC/IF, IHC-P
GTX636335	SDHA antibody [HL1117]	Rec Rb mAb	Hu, Ms, Rat, Zfsh, Dm	WB, ICC/IF, IHC-P, IHC-Wm
GTX637059	Hsp70 antibody [HL1580]	Rec Rb mAb	Hu, Ms, Rat, Cat, Dog	WB, ICC/IF, IHC-P
GTX102419	Albumin antibody	Rb pAb	Hu, Ms, Rat, Cat, Dog	WB, ICC/IF, IHC-P, IHC-Fr, IHC, in vitro
GTX103292	Lamin B1 antibody	Rb pAb	Hu, Ms, Hm	WB, IHC-P, IP
GTX110089	HSP60 antibody	Rb pAb	Hu, Ms, Rat, Zfsh, Dm, Hm	WB, ICC/IF, IHC-P, ELISA
GTX112141	alpha Tubulin antibody	Rb pAb	Hu, Ms, Rat, Dm, Chk, C. elegans, Mosq, Tetrahymena	WB, ICC/IF, IHC-P, IHC-Fr
GTX628802	alpha Tubulin antibody [GT114]	Ms mAb	Hu, Ms, Rat, Zfsh, Goat, Dm, Crucian carp	WB, ICC/IF, IHC-P, IHC-Fr, FACS
GTX638140	alpha Tubulin antibody [HL2162]	Rec Rb mAb	Hu, Ms, Rat, Zfsh, Rb, Cat, Dog, Hm, AGMK, E. coli	WB, ICC/IF, IHC-P
GTX101279	beta Tubulin antibody	Rb pAb	Hu, Ms, Rat, Zfsh, Hm	WB, ICC/IF, IHC-P, IHC-Wm
GTX638580	Actin antibody [HL2372]	Rec Rb mAb	Hu, Ms, Rat, Rb, Dm, Cat, Dog, AGMK	WB, ICC/IF, IHC-P
GTX109639	beta Actin antibody	Rb pAb	Hu, Ms, Rat, Yeast, Sheep, Dm, Cat, Dog, Hm, ①	WB, ICC/IF, IHC-P, IHC-Fr, IP
GTX629630	beta Actin antibody [GT5512]	Ms mAb	Hu, Ms, Rat, Zfsh, Yeast, Rb, Goat, Dm, Cat, Dog, ... ②	WB, ICC/IF, IHC-P, IP
GTX637675	beta Actin antibody [HL1926]	Rec Rb mAb	Hu, Ms, Rat, Zfsh, Rb, Dm, Cat, Dog, AGMK	WB, ICC/IF, IHC-P
GTX133204	TBP antibody	Rb pAb	Hu, Ms, Rat	WB, IHC-P
GTX634166	TBP antibody [GT453]	Ms mAb	Hu	WB
GTX100118	GAPDH antibody	Rb pAb	Hu, Ms, Rat, Zfsh, Rb, Dm, Bov, Dog, Hm, Chk, ③	WB, ICC/IF, IHC-P, IP
GTX627408	GAPDH antibody [GT239]	Ms mAb	Hu, Ms, Rat, Zfsh, Yeast, Dm, Dog, Hm, Pig, Mk, ④	WB, ICC/IF, IHC-P, EMSA
GTX637966	GAPDH antibody [HL2062]	Rec Rb mAb	Hu, Ms, Rat, Zfsh, Rb, Cat, Dog, Hm, AGMK, E. coli	WB, ICC/IF
GTX114187	VDAC1 antibody [N1C2]	Rb pAb	Hu, Ms, Rat	WB, ICC/IF, IHC-P
GTX100539	PCNA antibody	Rb pAb	Hu, Ms, Rat, Dm, Golden Syrian Hamster	WB, ICC/IF, IHC-P, IHC-Fr, IP, IHC
GTX637858	PCNA antibody [HL1965]	Rec Rb mAb	Hu, Ms, Rat, Zfsh, Cat, Dog	WB, IHC-P
GTX628901	COX4 antibody [GT854]	Ms mAb	Hu, Ms, Rat	WB, ICC/IF, IHC-P
GTX638316	COX4 antibody [HL2264]	Rec Rb mAb	Hu, Ms, Rat, Zfsh	WB, ICC/IF, IHC-P
GTX102156	Cofilin 1 antibody	Rb pAb	Hu, Ms, Rat	WB, ICC/IF, IHC-P, IHC-Fr
GTX632582	Cofilin 1 antibody [GT217]	Ms mAb	Hu, Ms, Rat	WB, ICC/IF, IHC-P, IP
GTX104698	Cyclophilin A antibody [C1C3]	Rb pAb	Hu, Ms, Rat, Hm	WB, ICC/IF, IHC-P
GTX122148	Histone H3 antibody	Rb pAb	Hu, Ms, Rat, Dm, Pig, Mk, Fungi, Rice, ⑤	WB, ICC/IF, IHC-P, IP, ChIP assay, IHC
GTX108585	Cytochrome C antibody	Rb pAb	Hu, Ms, Rat, Dm, Dog	WB, ICC/IF, IHC-P, IHC-Fr
GTX633691	Cytochrome C antibody [GT577]	Ms mAb	Hu, Ms, Rat	WB, IHC-P
GTX638209	Cytochrome C antibody [HL2205]	Rec Rb mAb	Hu, Ms, Rat, Cat	WB, ICC/IF, IHC-P

- ① Hu, Ms, Rat, Yeast, Sheep, Dm, Cat, Dog, Hm, Chk, Pig, Mk, C. elegans, C. albicans, E. coli, Hrs, Mosq, Rice, Xenopus, Treeshrew, Plant, Worm
- ② Hu, Ms, Rat, Zfsh, Yeast, Rb, Goat, Dm, Cat, Dog, Mk, Xenopus
- ③ Hu, Ms, Rat, Zfsh, Rb, Dm, Bov, Dog, Hm, Chk, Pig, Mk, C. elegans, E. coli, Mosq, Nematode, Pika, Plant, Fish, Bacteria, Insect, Milkfish
- ④ Hu, Ms, Rat, Zfsh, Yeast, Dm, Dog, Hm, Pig, Mk, C. albicans, E. coli, Chinese Hamster
- ⑤ Hu, Ms, Rat, Dm, Pig, Mk, Fungi, Rice, Golden Syrian Hamster