



# Proteomics

WHERE RESEARCH  
MEETS DIAGNOSIS

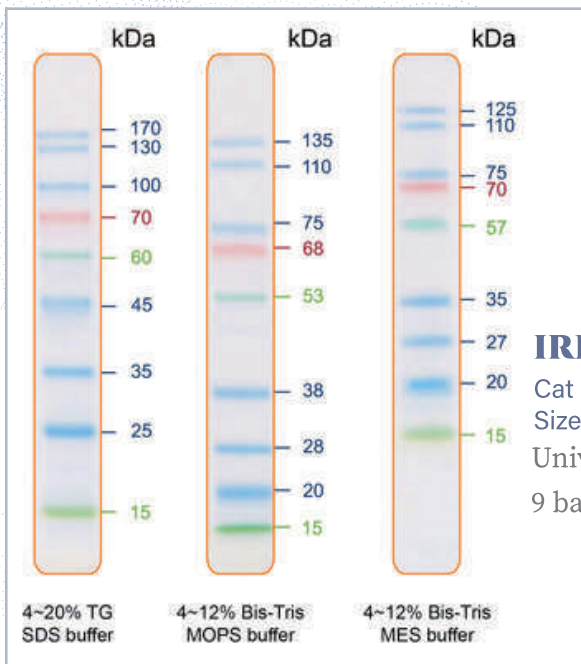
**BIO-HELIX**   
CO., LTD.

 **Stratech**

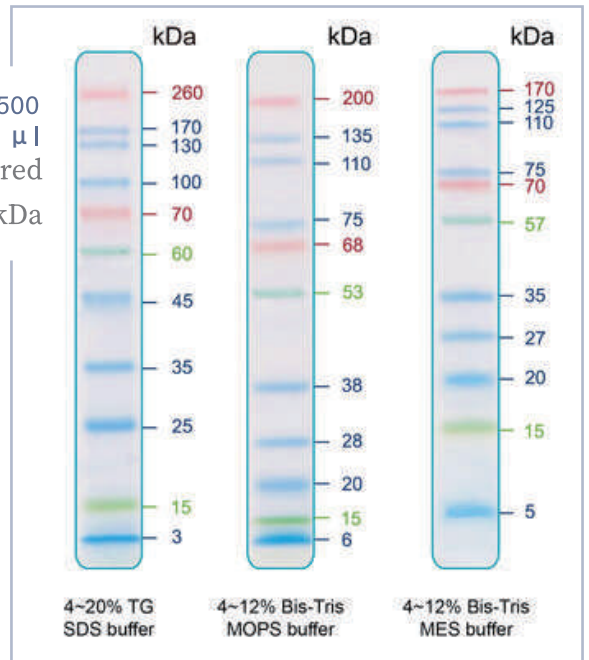
# Protein Marker/Ladder

## IRIS Series Prestained Protein Ladder

- Newly Launched Version
- New Manufacturing Process
- 4 Colors, with an unique Peacock Green at 60 kDa
- Broader Range: 3kDa – 260 kDa (IRIS11)
- Suits in all kinds of Protein Electrophoresis Conditions

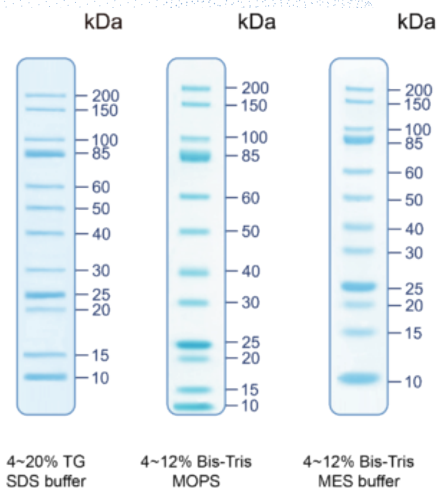


**IRIS 11**  
Cat No: PMI11-0500  
Size: 500  $\mu$ l  
Widely Covered  
11 bands, 3-260 kDa



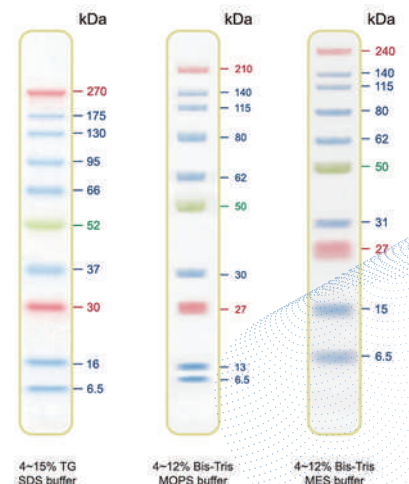
## Blu10 Plus

Cat No. PMB01-0500  
Size : 500  $\mu$ l  
Broader & Smaller  
10 bands, 6.5-270 kDa



## UNveil Unstained

Cat No. PMU12-0500  
Size : 500  $\mu$ l  
Unbiased Accuracy  
12 bands, 10-200 kDa



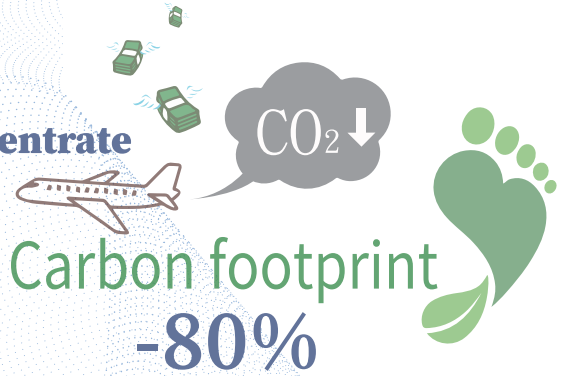
# Staining Reagent

## COOMASSIE<sup>nano</sup> Protein Staining Solution

Cat No: PS002-B500ML  
Size: 500 ml

Cat No: PS002-L05X  
Size: 1 L

5X Concentrate



- **Fast and Fabulous** – Visualization in 5 minutes, Sensitivity down to 10ng
- **Better Contrast** – Sharp bands & clean background
- **Safer & Greener** – No organic solvents, hazardous materials, less water usage
- **All in 1 Step** – No washing, heating, destaining

### High Sensitivity Orientation

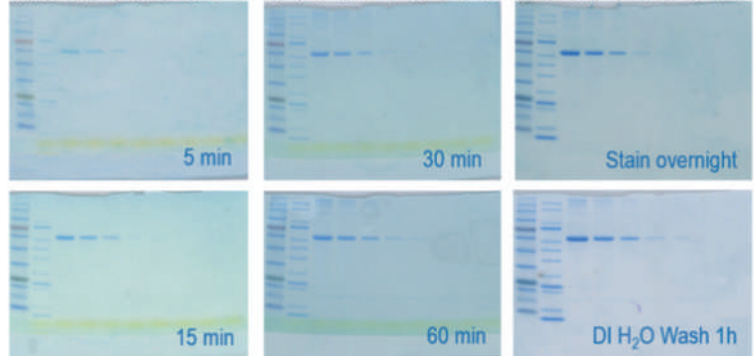
M1 A B C D E F G H I M2



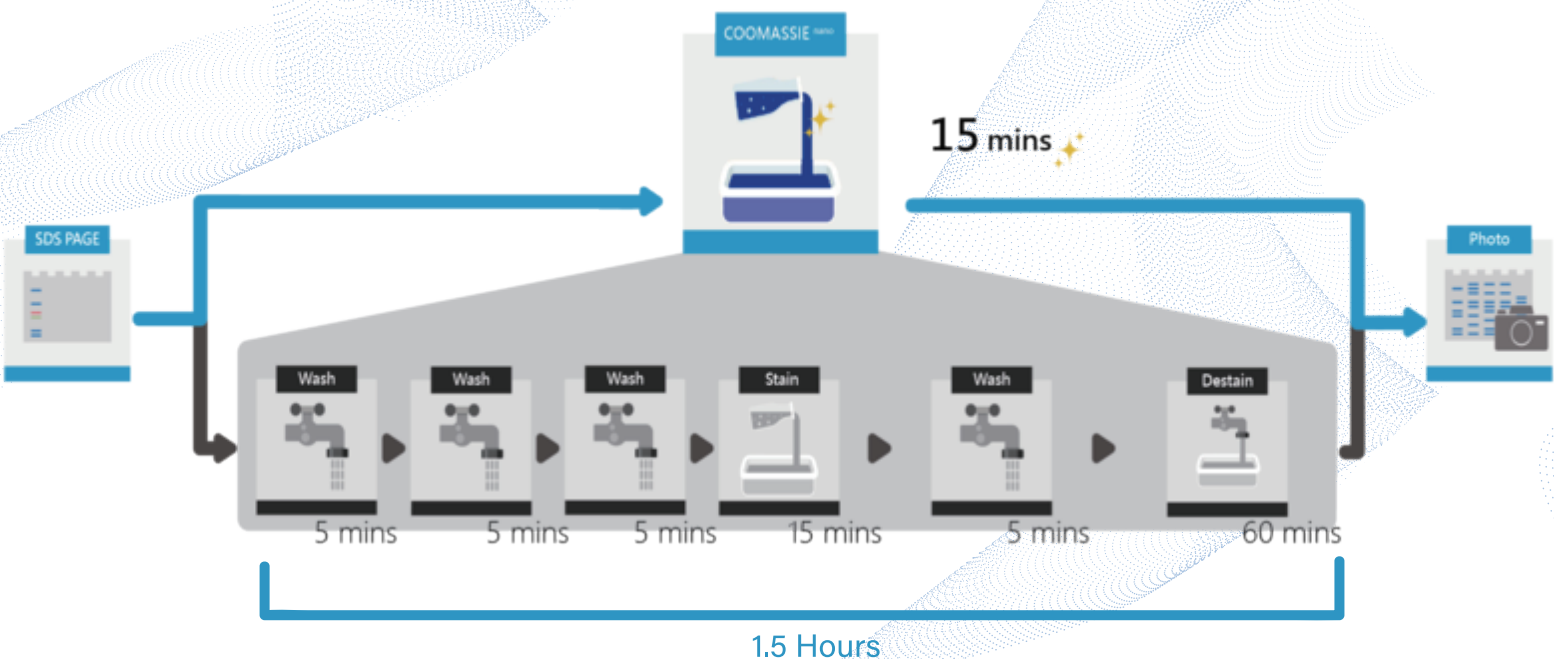
Lane M1: PM019-0500  
Lane A: BSA 2000 ng  
Lane B: BSA 1000 ng  
Lane C: BSA 500 ng  
Lane D: BSA 100 ng  
Lane E: BSA 50 ng  
Lane F: BSA 25 ng  
Lane G: BSA 12.5 ng  
Lane H: BSA 10 ng  
Lane I: BSA 5 ng  
Lane M2: PMU12-0500

### Time Saving Orientation

MU 1 2 3 4 5 6 7 8 MU 1 2 3 4 5 6 7 8 MU 1 2 3 4 5 6 7 8



M: Prestain ladder  
U: Unstain ladder  
Lane 1: BSA 2,000 ng  
Lane 2: BSA 1,000 ng  
Lane 3: BSA 500 ng  
Lane 4: BSA 100 ng  
Lane 5: BSA 50 ng  
Lane 6: BSA 10 ng  
Lane 7: BSA 5 ng  
Lane 8: BSA 1 ng



# Ponceau S Protein Staining Solution

Cat NO. PS003-B500ML/L10X

- Rapid protein stain for nitrocellulose or PVDF membrane
- Reversible & destainable for the incoming Western Blot procedures
- Reuseabl in a certain times
- Provided in 1X or 10X concentrated version to save the freight

1 2 3 4 5 6 7 8 9 10 11 12 13



Lane 1, 13: Prestained Protein Ladder#PM019-0500  
Lane 2-7: 2X Dilutions of Unstained Protein Ladder #PMU12-0500  
Lane 8-12: 2000, 1000, 500, 50 ng of BSA

## Blocking Solution

## OneStep Blocker

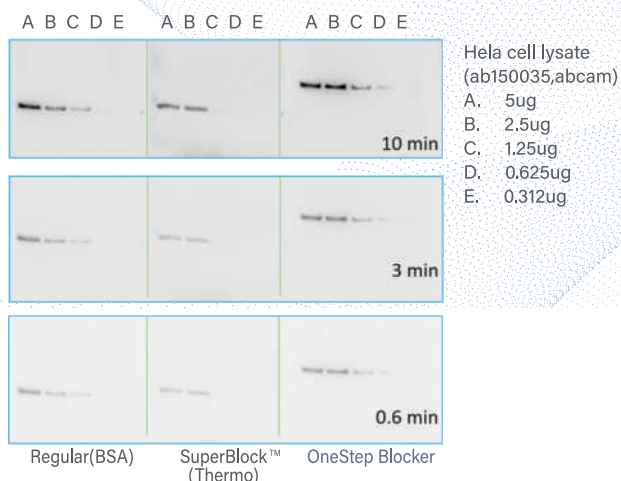
Cat NO: BS001-B500ML

### Weak Antibody Signal?

OneStep Blocker - A Western Blocking and Signal Enhancing Solution

### Features

- 1 3 steps in one
- 2 Enhances antibody signal
- 3 Enhances time-saving
- 4 Universal antibody diluent & NC membranes
- 5 No blocking step needed
- 6 Effective with any ECL
- 7 Less hands-on steps
- 8 Compatible with PVDF & NC membranes
- 9 Improves protein detection

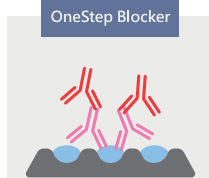


1° AB (ab8227,abcam): Rabbit anti-β Actin;  
2°AB (ab205718,abcam): Goat anti Rabbit HRP;

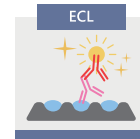
### OneStep



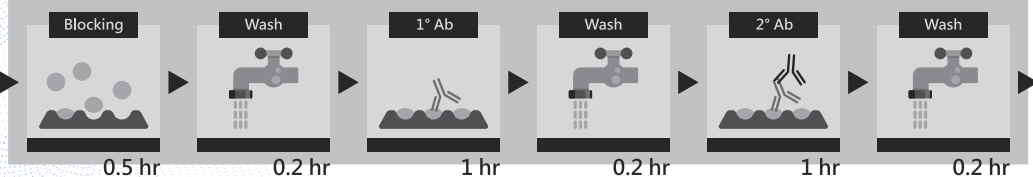
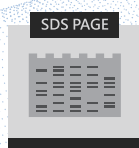
### OneStep Blocker



### ECL



### Conventional

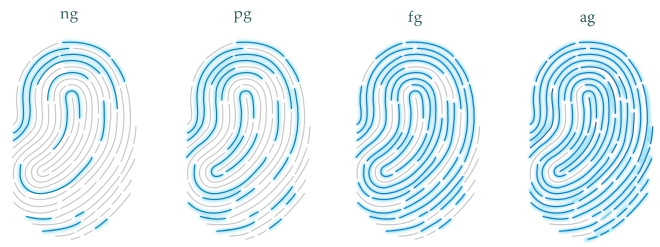


2.5

days

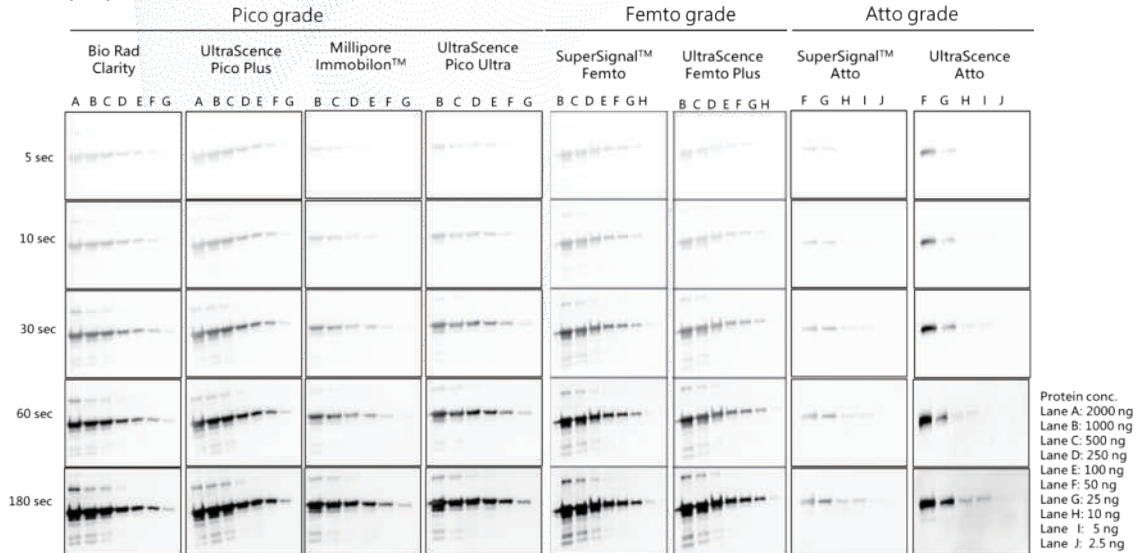


# HRP Substrate



## UltraScience Western Substrate

Cat No: CCH321-B100ML/P10L, CCH345-B100ML/P10L, CCH375-B100ML/P10L, CCH385-B100ML/P10L  
 Size: 100 ml / 5L x 2 (set)

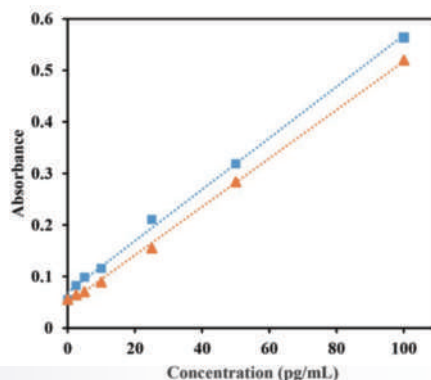


Bio-Helix Western Substrates	Advantages for you	Sensitivity	Significantly Comparable Performance with
UltraScience <b>Pico Plus</b> Western Substrate	Best value for entry-level Western Substrates with detecting the abundant proteins	low picogram to high femtogram	Thermo Scientific™ Pierce™ ECL Substrate Thermo Scientific™ SuperSignal™ West Pico PLUS Cyanagen™ Westar Nova™ 2.0 Advanta™ WesternBright™ ECL Abcam High Sensitivity ECL Substrate Kit
UltraScience <b>Pico Ultra</b> Western Substrate	Better choice for seeking lower abundant proteins, over 30 times sensitivity than UltraScience Pico Plus western substrate	low picogram to mid femtogram	Millipore™ Immobilon™ Western Substrate Fujifilm™ Wako™ ImmunoStar® Zeta Cytiva™ Amersham™ ECL Prime Advanta™ WesternBright™ Quantum™ Abcam Very High Sensitivity ECL Substrate Kit Cyanagen™ Westar™ ETA C Ultra 2.0 Thermo Scientific™ SuperSignal™ West Dura
UltraScience <b>Femto Plus</b> Western Substrate	Born to seek, seeking less abundance proteins in your Western Blot, even low femtograms	mid femtogram to low femtogram	Fujifilm™ Wako™ ImmunoStar® LD GeneTex™ Trident™ Femto Thermo Scientific™ SuperSignal™ West Femto Advanta™ WesternBright™ Sirius™ Abcam Ultra High Sensitivity ECL Substrate Kit Cyanagen™ Westar™ Supernova™ Cytiva™ (GE Healthcare™) ECL Select™
UltraScience <b>Atto</b> Western Substrate	Break the record, providing the most sensitive and brightest protein signal for your Western Blot.	low femtogram to high attogram	Thermo Scientific™ SuperSignal™ West Atto Cyanagen™ Westar™ Hypernova™

## UltraScience TMB ELISA Substrate

Cat No: TM001-B100ML  
 Size: 100 ml

- Ready-to-use solutions
- No hydrogen peroxide required
- No filtering required
- Noncarcinogenic
- Significantly more sensitive than leading manufacturers on the market



# WE CARE!

# ESG



## ENVIRONMENT

Powder form of ECL Substrates Weigh **130grams**  
to be prepared for **13Kg** of the Reaction Solution



US Patent No: US10,711,185



ESG STRATEGY 2022  
Powder ECL Gets You Started

99% of CO<sub>2</sub>  
Emission Reduced

## UltraScience CLIA & CMLA Substrate

Tailor-made

- Limit of detection (LOD) ranges from nano-gram to femto-gram.
- Product format offers the powder or liquid format.

**Stratech**

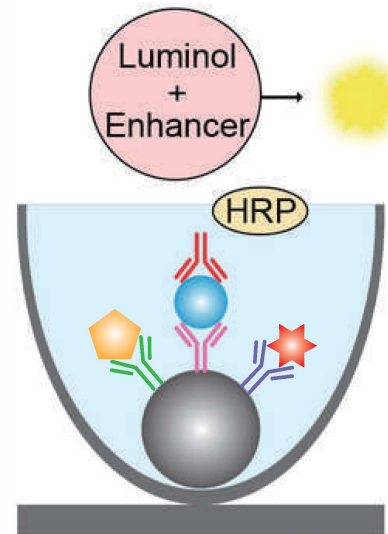
info@stratech.co.uk  
+44 (0) 1638 782600

@stratech\_uk

@stratech-scientific-ltd

@stratech.scientific

[www.stratech.co.uk](http://www.stratech.co.uk)



Chemiluminescence Substrate



we plant a tree  
for every  
order placed



we offer a full  
product  
guarantee



free delivery for  
all UK  
Universities



outstanding  
technical  
support